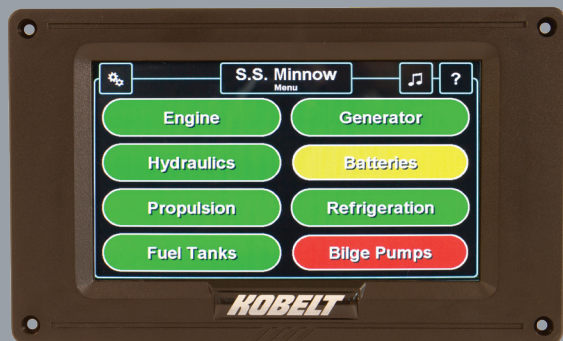
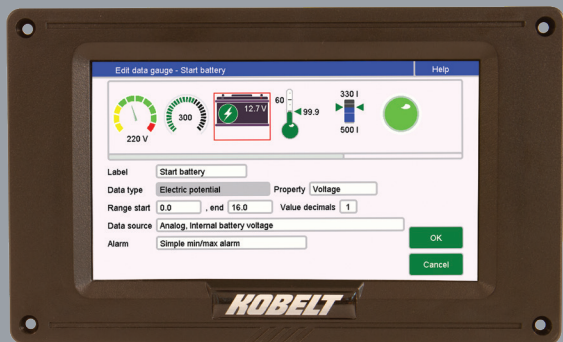


VITALS

VESSEL SYSTEM MONITORING & SMART ALARM DEVICE (highly configurable)



KOBELT introduces the next generation in vessel monitoring.



Vitals provides advanced warning of potential equipment failures with an array of smart alarms that alert you to potential problems before they become catastrophic. The specific benefit of this centralized monitoring and alarm system is that it can be easily configured to suit *your* specific boat. Be it the temperature of a bearing or the cycle times of your bilge pumps, Vitals will monitor your vessel's systems and alert you when any piece of monitored equipment is outside of its defined running parameters.

With Vitals, you can set early warning signals at thresholds relevant to the specific equipment that needs monitoring. This improves the accuracy of alarms and avoids nuisance notifications. When an alarm is activated, the Vitals menu will accurately pinpoint exactly what the alarm pertains to, and corrective action can be taken immediately, with no wasted downtime trying to identify the problem.

Vitals is designed to suit a vessel of any size, and is easy and intuitive to set up and configure. Most importantly, Vitals offers an early warning system that can prevent an otherwise simple problem from resulting in an expensive repair, downtime, and the lost enjoyment of your vessel. Enjoy your voyage knowing that you are protecting your investment *and* protecting the safety of those on board with Vitals.

Features

- Color touch screen
- NMEA2000 & NMEA0183 interfaces
- Eight (8) digital inputs
- Four (4) analog inputs
- Two (2) resistive input channels
- Two (2) frequency input channels
- Smart Temperature bus supports twelve (12) sensors
- One (1) controllable solid state relay output

Benefits

- Easy & intuitive to install and configure
- Highly configurable – monitors a wide range of inputs
- SMART functions to customize your warning thresholds & alarms
- Full featured engine monitoring
- Supports monitoring of battery voltage, oil pressure, water temperature, turbo boost, transmission pressure and much more
- Monitors tank levels with standard tank level float sensors
- Measures RPM sensor signals for two (2) engines
- Supports external alarm speaker and external visual alarm such as strobe light
- Temperature sensors can measure alternators, pumps, hydraulic tanks, engine compartment and more
- Converts and outputs measured signals to NMEA2000 network traffic

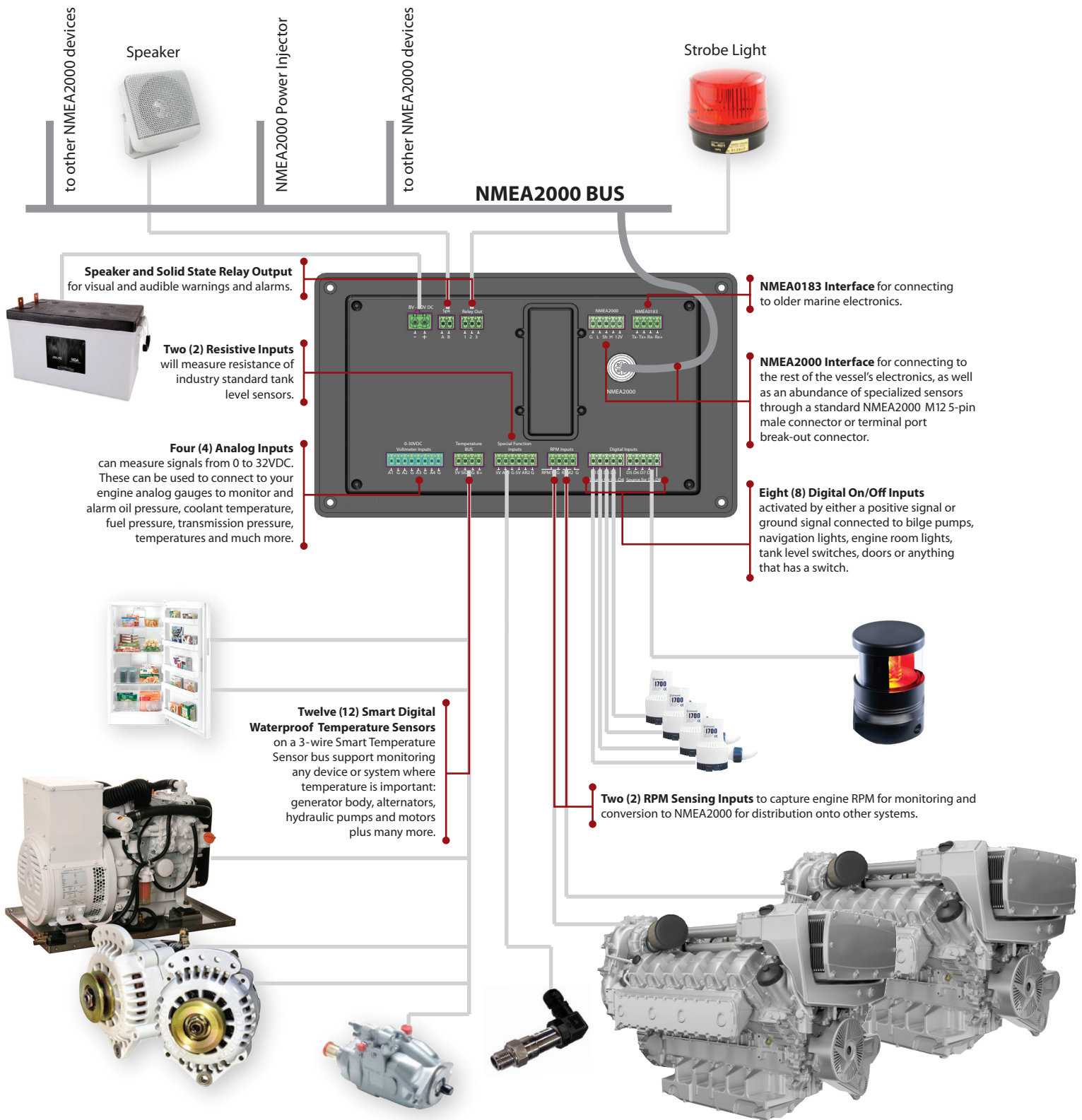
VITALS | TECHNICAL SPECIFICATIONS

PARAMETER	VALUE	UNITS	COMMENTS
Electrical			
Operating Voltage	9 - 32	VDC	Compatible with 12VDC and 24VDC systems
Operating Current	900	mA	At 9VDC operation
Display Size	177.40 [7.0]	mm [inches]	Diagonal
Display Resolution	800 x 480	pixels	-
Display Type	Color LCD	-	-
Contrast Ratio (Typical)	500:1	ratio	-
Digital Inputs*	8	ports	0 - 32VDC, 24-channel banks
Analog Inputs	4	ports	0 - 32VDC
Resistive Inputs	2	ports	0-1,000 Ohm resistance measurement
RPM Inputs	2	ports	Range of 1.5 - 28V operation
Smart Bus	0 to 12	sensors	Drop bus configuration for temperature sensors
Temperature Sensors**	-55 to +125 [-67 to +257]	°C [°F]	±0.5°C accuracy from -10°C to +85°C
NMEA2000	1	port	-
NMEA0183	1	port	-
Relay Output	1	Solid State	Maximum 32V/0.5A operation
Alarm Speaker Output	2	Watt	Speaker output for audible alarms. Maximum power limit.
Mechanical			
Overall Width	221 [8.7]	mm [inches]	-
Overall Height	134 [5.28]	mm [inches]	-
Overall Depth	52 [2.03]	mm [inches]	Not including connecting cables
Mounting Opening	111.3 x 190.5 [4.38 x 7.50]	mm [inches]	Use the provided template
Enclosure Material	ABS Plastic - Dark Grey	-	UV resistive
Unit Weight	0.64 [1.42]	kg [lbs]	-
Environmental			
Operating Temperature	-20 to +70 [-4 to +158]	°C [°F]	-
Storage Temperature	-30 to +80 [22 to +176]	°C [°F]	-
Operating Humidity	95	%	Non Condensing
Storage Humidity	75	%	Non Condensing
IP Rating	IP56 / IP42	Front / Back	-

* On "Activate on High", the input will be triggered with +5VDC or more. On "Activate on Low", 0VDC ground connection is shared with the unit; ground must be provided.

** Accessory product available separately. Use Kobelt P/N 6011-0010 to order. Not included with the purchase of Vitals.

VITALS | FUNCTIONAL DIAGRAM



KOBELT

VITALS | DIMENSIONAL DRAWINGS

