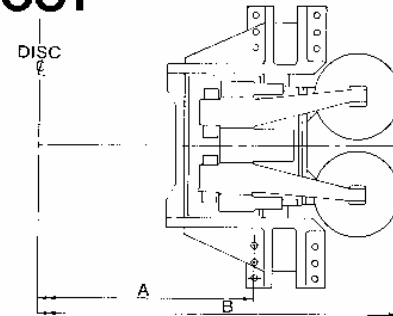
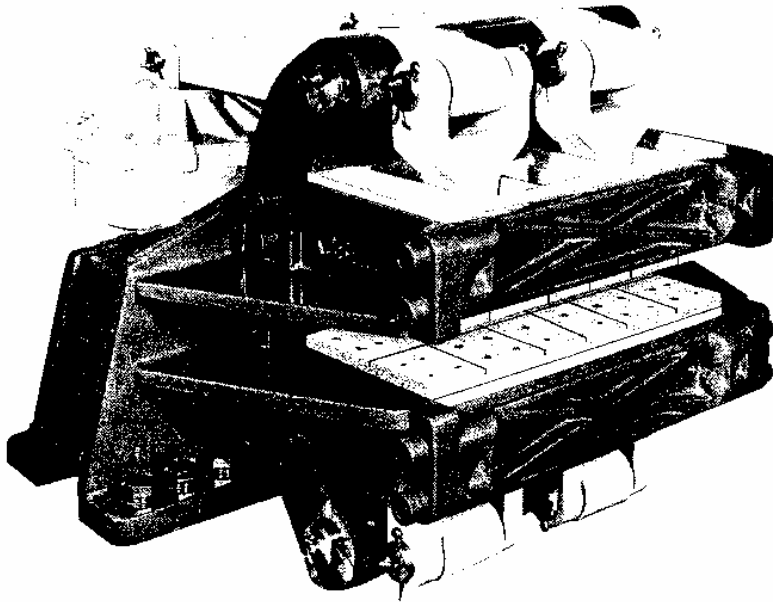


**AIR ACTUATED DISC BRAKES  
CALIPER NO. 1720  
TWIN FOOT**



DISC DIA.		A		B	
Inch	mm	Inch	mm	Inch	mm
60"	(1524)	29 <sup>1</sup> / <sub>16</sub> "	(757)	49 <sup>5</sup> / <sub>16</sub> "	(1260)
72"	(1829)	36"	(914)	56 <sup>1</sup> / <sub>16</sub> "	(1143)
84"	(2134)	42 <sup>3</sup> / <sub>16</sub> "	(1072)	63"	(1600)
96"	(2438)	48 <sup>3</sup> / <sub>16</sub> "	(1224)	69"	(1753)
108"	(2743)	54 <sup>3</sup> / <sub>16</sub> "	(1377)	75"	(1905)
120"	(3048)	60 <sup>3</sup> / <sub>16</sub> "	(1529)	81"	(2057)
132"	(3353)	66 <sup>3</sup> / <sub>16</sub> "	(1681)	87"	(2210)
144"	(3658)	72 <sup>3</sup> / <sub>16</sub> "	(1834)	93"	(2362)

**CALIPER**

Total normal force 226000 lb (102727 kg)  
 Total shoe area 388 in<sup>2</sup> (2503 cm<sup>2</sup>)  
 Allowable shoe wear 0.56 in (14 mm)  
 Max. air pressure 100PSI (7.03 kg/cm<sup>2</sup>)  
 Max. power input 930HP (693.0 kw)  
 Assembly weight 2750 lb (1250 kg)

**DISC - 2<sup>1</sup>/<sub>2</sub>" (63 mm)**

Disc Dia	60	72	84	96	108	120	132	144
Inch	60	72	84	96	108	120	132	144
mm	(1524)	(1829)	(2134)	(2438)	(2743)	(3048)	(3353)	(3658)
Acting Rad.								
Ft.	2.042	2.542	3.042	3.542	4.042	4.542	5.052	5.542
mm	(622)	(775)	(927)	(1080)	(1232)	(1384)	(1540)	(1689)
Max. RPM	600	450	400	340	300	270	250	230
Torque								
lb. - ft.	230746	287246	343746	400246	456746	513246	570876	626246
Kgm	(31900)	(39712)	(47523)	(55334)	(63145)	(70956)	(78924)	(86578)

**DESCRIPTION:**

The Kobelt calipers basically consist of a lever and brake shoe system applied by either compressed air or spring (Fail Safe). The Fail Safe version can be released with compressed air or low pressure hydraulics.

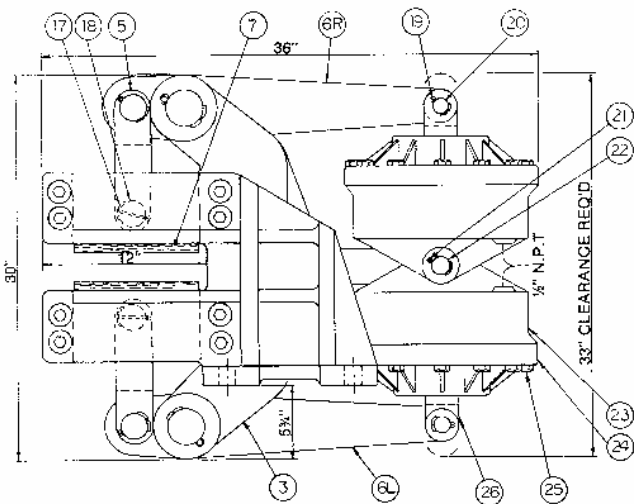
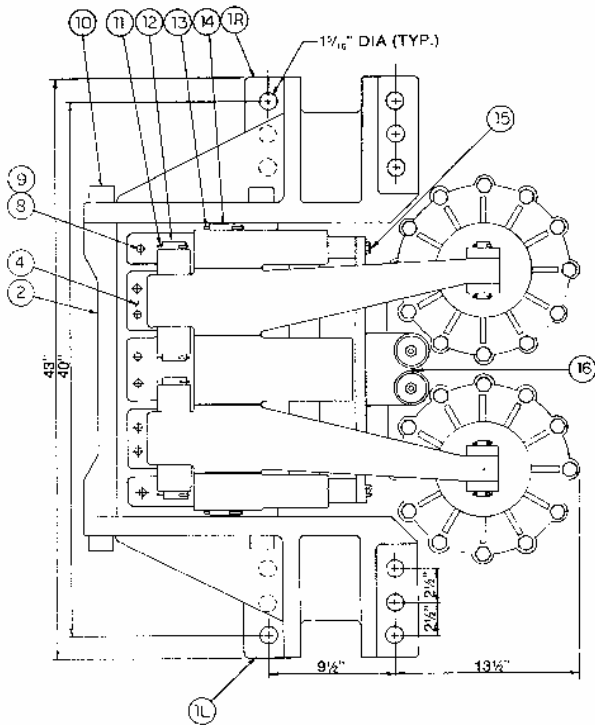
**ORDERING INFORMATION**

Model Designation Letter Codes.

- A - Air Applied
- B - Fail Safe

To order state model number followed by model designation letter codes.

NOTE: 1. Specifications in metric units shown in parentheses  
 2. For more detailed technical information refer to Kobel's general engineering section on disc brakes.



### 1720 TWIN FOOT

ITEM	QUANTITY	PART NUMBER	DESCRIPTION
1	2	1720-0001	Mounting Foot (Left and Right)
2	2	1720-0002	End Plate
3	1	1720-0003	Frame
4	2	1720-0004	Brake Shoe
5	4	1720-0005	Brake Shoe Clevis
6	4	1720-0006	Lever (Left and Right)
7	2	1720-0007	Brake Lining
8	80	1034-1116	Brake Lining Fasteners (Screw)
9	80	1022-0111	Brake Lining Fasteners (Nuts)
10	16	1002-2248	Socket Head Capscrew
11	8	1026-1048	Cotter Pin
12	4	1035-32124	Clevis Hinge Pin
13	4	1026-1048	Cotter Pin
14	2	1035-40352	Lever Hinge Pin
15	4	1001-1432	Bolt
16	1	1720-0016	Actuator Mounting Assembly
17	8	1026-1048	Cotter Pin
18	4	1035-32104	Brake Shoe Pin
19	8	1026-1032	Cotter Pin
20	4	1035-2048	Actuator Clevis Pin
21	4	1026-1032	Cotter Pin
22	2	1035-20104	Actuator Pin
23	4	1720-0023	Actuator Housing
24	4	1720-0024	Actuator Cap
25	48	1001-1420	Bolts
26	4	1720-0026	Actuator Clevis

**Note:** All data on this brake selection sheet are for reference and estimating purposes only. To ensure against the hazards of brake misapplication, the customer is urged to fill out the Customer Application Data sheet and include it with each enquiry.