

Model 2048 Twin Engine, Medium Duty, Single Lever Control Head



The 2048 control head is a twin engine version of the 2046 control head. It has the same features as the 2046 single lever control head.

In order to warm up an engine without gear engagement, the control handle is pulled away from the dome approximately 1/4". This will disengage the clutch mechanism and will allow engine acceleration.

When the control handle is returned to the neutral position, the clutch mechanism is automatically engaged.

The control head also provides a small detent in the full throttle position in one direction only (forward). This will prevent the engine from creeping back. By reversing the detent roller and spring assembly, the full speed detent can also be reversed.

Ordering Information

Model Designations:

K	With chromed cover and handles.	M	With black epoxy painted cover and chromed handles.
L	With brass finish cover and handles.		

The standard model 2048 control head is supplied as follows:

1. With chromed cover and handles.

To order, state model number followed by Model Designation letter codes.

Example

Model 2048 control head chrome would be a 2048-K.

Model 2048 Twin Engine,
Medium Duty, Single Lever Control Head

Note

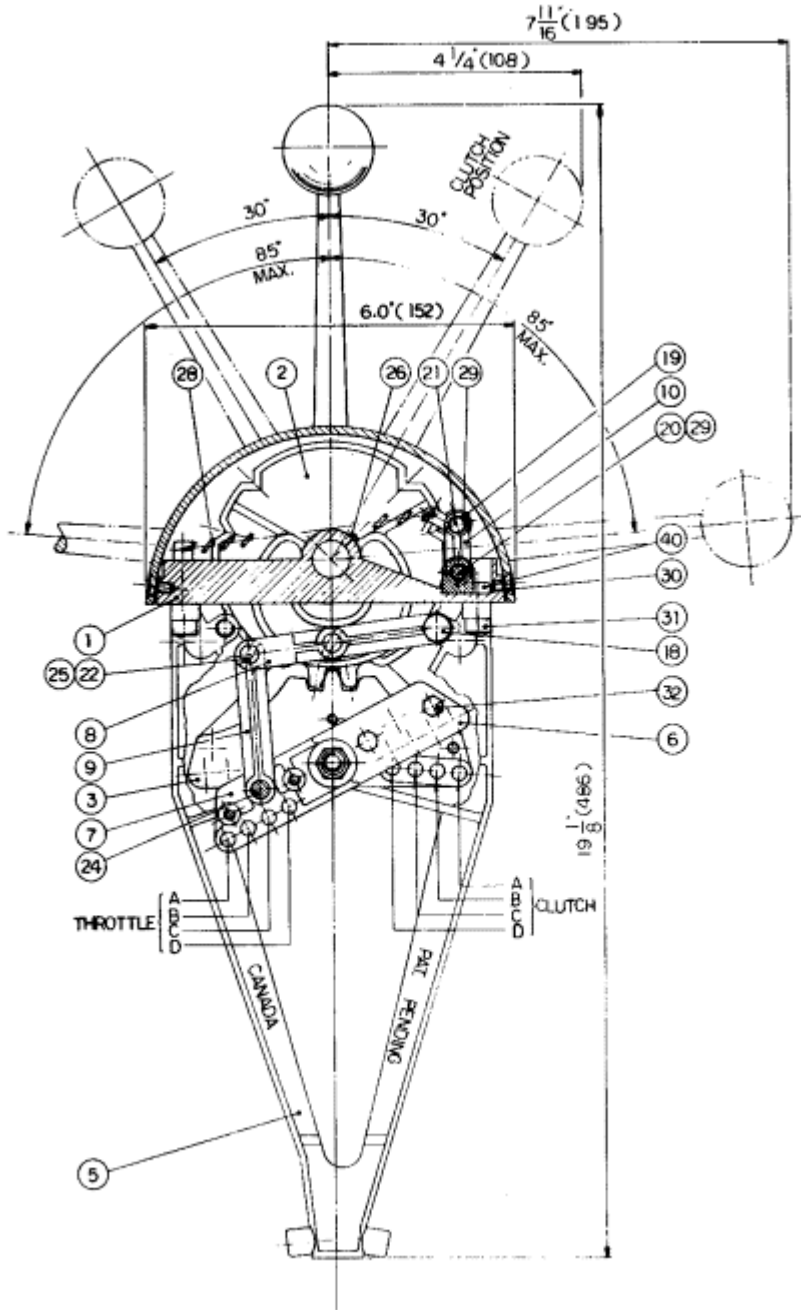
- Plastic labels are available to indicate Neutral, Forward and Reverse positions, as well as the speed scales. To order use Part No. 2046-0015.
- Cable connector kits are ordered separately. Each push pull cable end attached to the control head requires one kit.
- **IMPORTANT:** Model 2048 is designed to work as a single station unit only.

Weight

14.37 lbs. (6.5 kg)

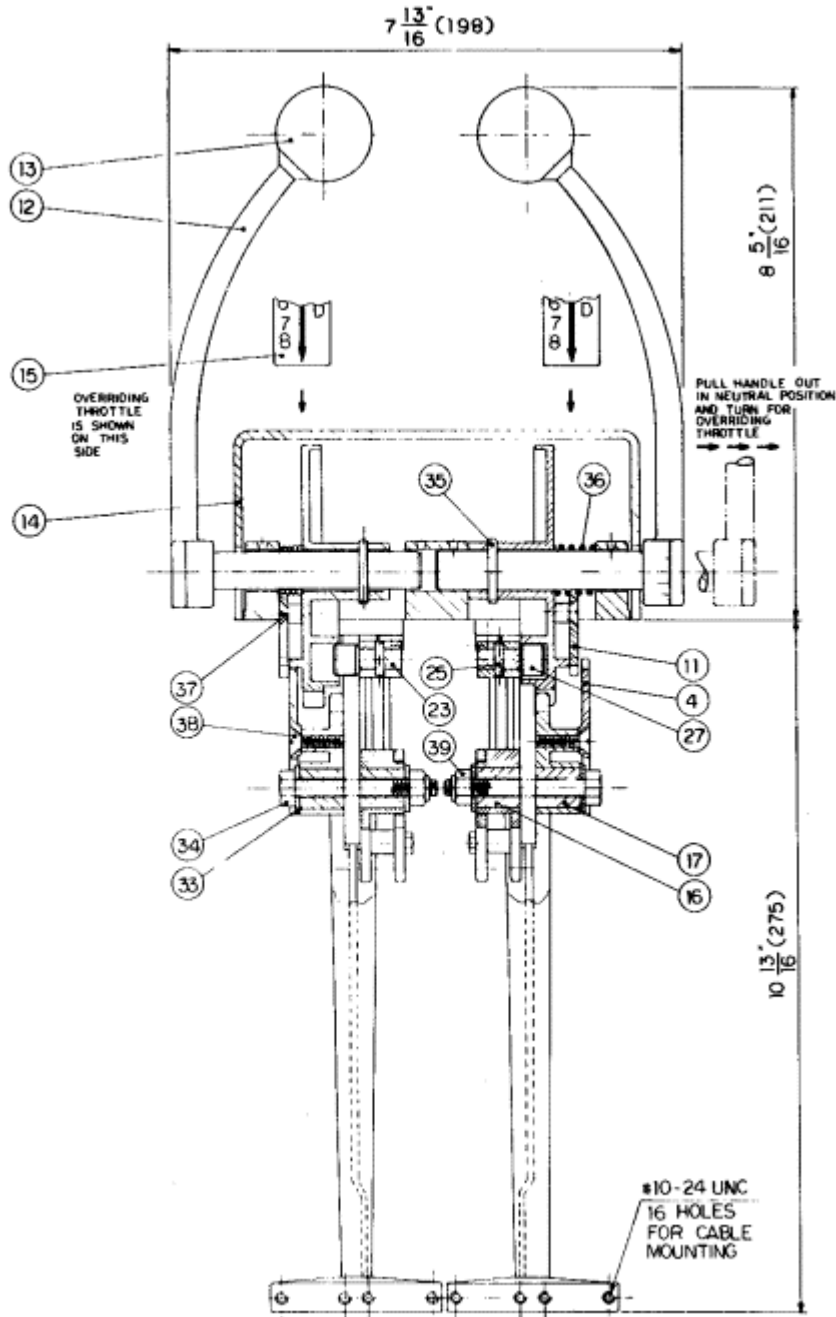
Dimensions and Parts

Side View



Model 2048 Twin Engine,
Medium Duty, Single Lever Control Head

Front View



Model 2048 Twin Engine,
Medium Duty, Single Lever Control Head

ALL DIMENSIONS IN INCHES (MM)

ITEM	QUANTITY	PART NUMBER	DESCRIPTION
1	1	2048-0001	Frame
2	2	2046-0002	Centre Cam
3	2	2046-0003	Pivot Plate
4	2	2046-0004	Retainer
5	2	2046-0005	Support
6	2	2046-0006	End Plate
7	2	2046-0007	Throttle Cam
8	2	2046-0008	Link No. 1
9	2	2046-0009	Link No. 2
10	2	2046-0010	Detent Lever
11	2	2046-0011	Cam Retainer
12	2	2046-0012	Handle
13	2	2030-0001	Black Knob
14	1	2048-0002	Dome
15*	2	2046-0015	Name Plate
16	2	2046-0016	Throttle Bushing
17	2	2046-0017	Clutch Bushing
18	2	2046-0018	Shoulder Bolt
19	2	2046-0019	Detent Roller
20	1	2048-0006	Pillow Block Pin
21	2	2046-0021	Detent Link Pin
22	2	2046-0022	Link Pin
23	2	2046-0023	Link Solid Pin
24	2	2046-0024	Pivot Plate Pin
25	4	1024-0510	Spring Pin
26	2	1016-0804	Set Screw
27	2	2046-0027	Throttle Roller
28	2	1202-0002	Spring
29	6	1029-1025	Snap Ring
30	2	1005-0808	Oval Head Machine Screw Slotted
31	8	1002-1010	Socket Head Capscrew
32	8	1001-0808	Hex. Head Capscrew
33	4	1023-0238	Washer
34	2	1001-1136	Hex. Head Capscrew
35	2	1024-0816	Spring Pin
36	2	1201-0108	Spring
37	4	1009-0806	Flat Head Machine Screw Phillips
38	6	1009-0808	Flat Head Machine Screw Phillips
39	2	1022-0311	Lock Nut
40	1	2048-0005	Pillow Block

* Quantity may vary.

2048 "Cut-Out" Dimensions

