



MODEL 2050 HEAVY DUTY SINGLE LEVER CONTROL HEAD

The model 2050 control head was designed for the demanding boat owners who require a non-corrosive unit that offers dependability, accuracy and many years of trouble-free service. This line of Kobelt quality products has a total absence of aluminum and is made from die cast silicon bronze and stainless steel hardware. The overriding throttle is interlocked and is only operative when the single lever control handle is put in neutral position. When the overriding throttle is moved above idling it is not possible to engage the gear until the throttle handle is returned to the idle position. The overriding throttle is limited to approximately 2/3 maximum engine speed. This control head has provision for five different connecting points for the throttle cable and therefore provides five different stroke lengths. In order to obtain engine acceleration the cable must be installed to provide a pulling action on the speed setting device. The clutch control cam is equipped with four different connecting points for the clutch cable. The clutch cable can be installed to provide either push or pull for either forward or reverse directions.

ORDERING INFORMATION

Model Designations:

- H - with one neutral safety switch
- K - with chrome finish cover and handle
- L - with satin brass finish cover and handle
- M - with black epoxy finish cover and handle
- NN - with one long handle with friction and detent
- PP - with one short handle with friction and detent
- S - right hand model
- T - left hand model

The standard model 2050 control head is supplied as:

- i. With chrome finish cover and handle (K)
- ii. Without neutral safety switch
- iii. With long handle with friction and detent (NN)
- iv. Right hand model (S)

To order, state model number followed by Model Designation letter codes.

Example. 2050-KNNS

Note:

Cable connector kits are ordered separately. Each push pull cable end attached to the control head requires one kit.

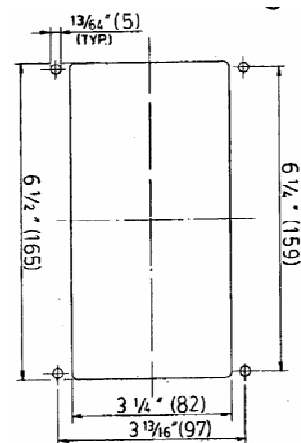
Ordering numbers:

2050-0901 for no. 10-32 (30 series) connector kit

2050-0902 for 1/4-28 (40 series) connector kit

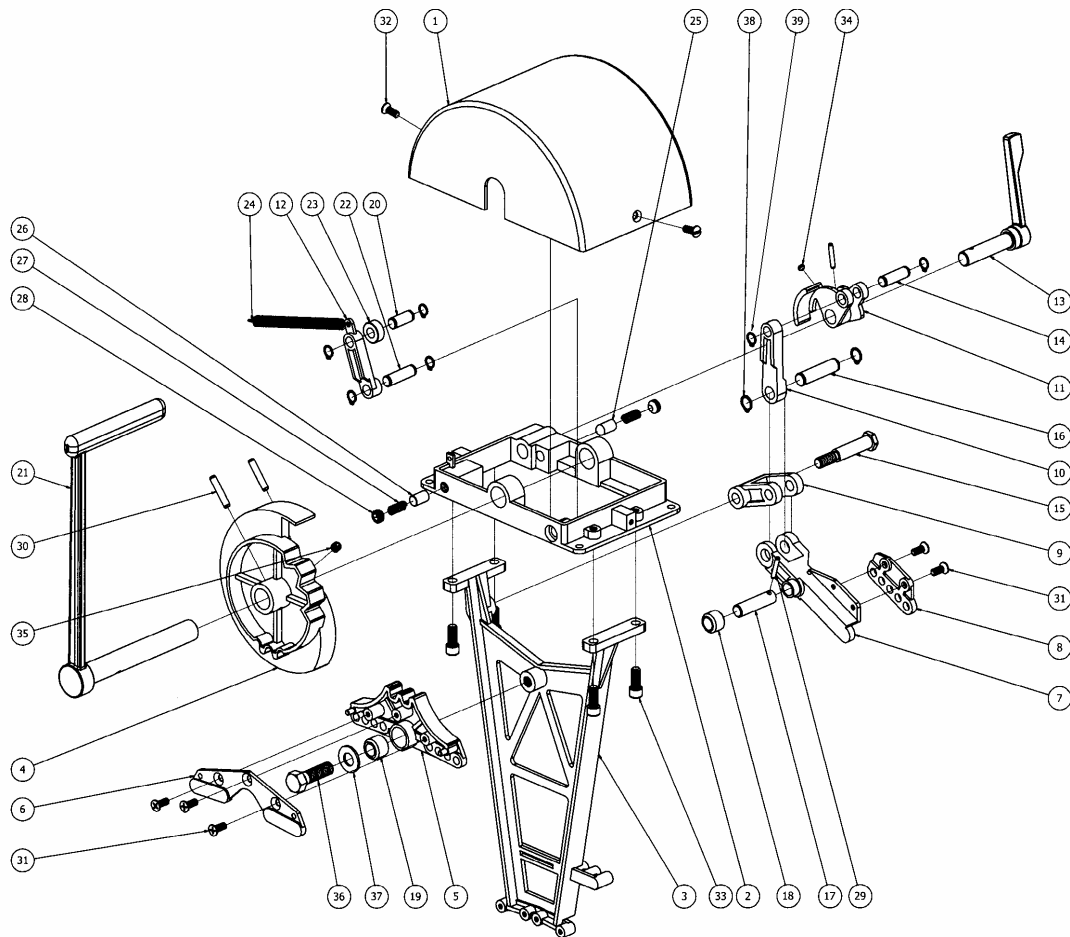
2050-0903 for Neutral Safety Switch kit

Weight: 10 lb. (4.5 kg)



Installation Dimensions

PARTS LIST



Item	Qty	P/N	Description	Item	Qty	P/N	Description
1	1	2050-0001	Dome	21	1	2534-0003	Long handle
2	1	2050-0002	Frame	22	1	2050-0022	Pin
3	1	2050-0003	Support	23	1	2542-0003	Roller
4	1	2050-0004	Centre cam	24	1	1202-0001	Tension spring
5	1	2050-0005	Pivot gear	25	1	2545-0012	Detent pin
6	1	2050-0006	Pivot plate cable clamp	26	1	2545-0021	Friction pad
7	1	2050-0007	Cable clamp arm	27	2	1201-0062	Spring
8	1	2050-0008	Cable clamp	28	2	1016-1204	Set screw
9	1	2050-0009	Clevis	29	2	1024-0512	Pin, slotted
10	1	2050-0010	Link	30	2	1024-0816	Pin, slotted
11	1	2050-0011	Throttle override link	31	5	1009-0808	Flat head screw
12	1	2050-0012	Detent link	32	2	1005-0008	Oval head screw
13	1	2050-0013	Throttle handle	33	4	1002-1010	Socket head cap screw
14	1	2050-0014	Pin	34	1	1016-0804	Set screw
15	1	2050-0015	Hex head shoulder bolt	35	1	1016-1004	Set screw
16	1	2050-0016	Pin	36	1	1001-1220	Hex bolt
17	1	2050-0017	Pin	37	1	1023-0235	Washer
18	1	2050-0018	Roller guide	38	2	1029-1037	External retaining ring
19	1	2050-0019	Roller bushing	39	6	1029-1031	External retaining ring
20	1	2050-0020	Pin				