

MODEL 2517 4-WAY LEVER OPERATED 3 POSITION VALVE 1/4" N.P.T.

This valve offers quality and excellent flow characteristics at a low price. The unit basically consists of two 3-way valves in one common housing. With the lever in the mid-position both valves are vented to atmosphere. Moving the lever either way opens one of the 3-way valves, delivering full supply pressure to the corresponding output. This valve can be stacked with any of the 2510 series valves using a common air supply.

Weight: 3.3 lbs. (1.5kg)

Materials: Die cast silicon bronze and stainless steel hardware

Maximum Supply Pressure: 200 PSI (13.8 BAR)

Operating Temperature Range: -40°C to +90°C

Pipe Port Size: 1/4" N.P.T.

APPLICATIONS

- Pneumatic remote control of double acting cylinders, clutches, PTO's, winches, etc.
- Used for various industrial and marine applications, where a 3 position 4-way valve (not pressure compensating) is required

ORDERING INFORMATION

- E - Spring return
- F - Neutral position handle lock
- G - 3 position handle lock
- K - Neutral position detent (with 45° handle travel)
- L - 22° handle travel each way (with options E or G)
- M - 45° handle travel each way

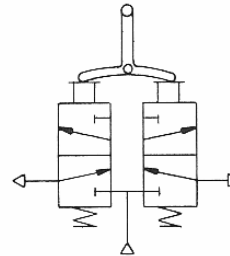
To order state model number followed by the desired model designation letter codes

Example: 2517 with spring return, neutral position handle lock and 45° handle travel.
Ordering No. 2517 - EFM

All 2510 series valves can be stacked with the use of an optional stacking adaptor kit. One is required for every valve stacked.

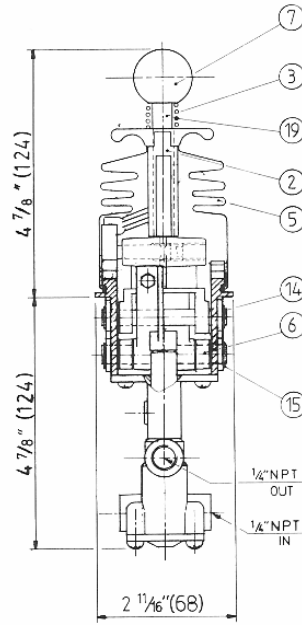
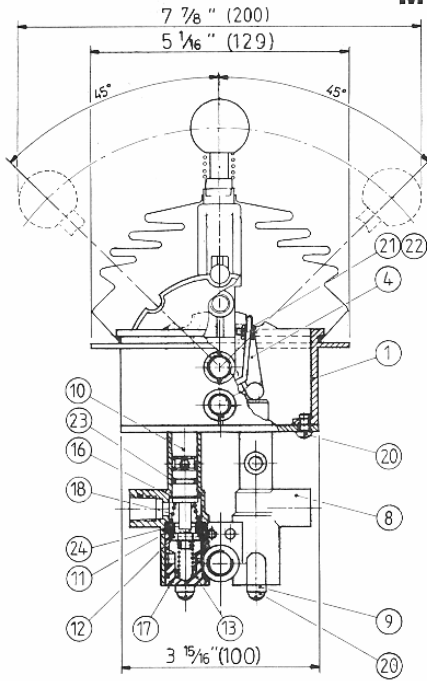
Ordering No. 2511 - 1000

SCHEMATIC SYMBOL



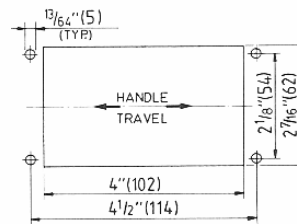
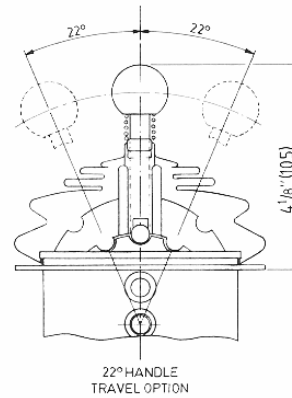
Patent Pending

DIMENSIONS AND PARTS LIST MODEL 2517



ITEM	QTY.	PART NUMBER	DESCRIPTION
1	1	2511 - 0001S	Frame (3 Pos. Lock)
1	1	2511 - 0001D	Frame (Neutral Pos. Detent)
1	1	2511 - 0001L	Frame (Neutral Pos. Lock)
2	1	2511 - 0002	Latch
3	1	2511 - 0003	Handle
4	2	2511 - 0004	Link
5	1	2511 - 0005	Rubber Boot
6	*2	2511 - 0007	Spacer
7	1	2030 - 0001	Knob
8	1	2517 - 0001	Valve Body
9	2	2517 - 0002	Retainer Bar
10	2	2517 - 0003	Spool
11	2	3804 - 0003	Seat
12	2	3804 - 0004	Poppet
13	2	3804 - 0005	Retainer
14	*2	2511 - 0006	Pin
15	*4	1029 - 1037	Snap Ring
16	2	1029 - 2050	Snap Ring
17	2	1201 - 0009	Spring
18	2	1201 - 0141	Spring
19	1	1201 - 0147	Spring
20	8	1010 - 0806	Round Hd. Screw
21	2	1001 - 0810	Hex. Hd. Screw
22	2	1022 - 0108	Nut
23	2	1101 - 0012	"O" Ring
24	4	1101 - 0016	"O" Ring

*Qty. may vary



"CUT-OUT DIMENSIONS"

All dimensions in inches (mm)

KOBELT MANUFACTURING
COMPANY LIMITED