

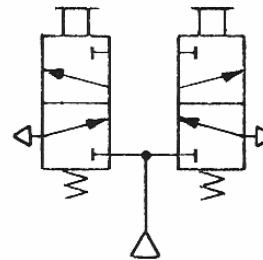
APPLICATIONS:

- Used mainly in Kobelt control heads 2575 and 3609 and air piloted 3403 valve.
- Used wherever a mechanically actuated four-way directional control valve is required.

ORDERING INFORMATION:

To order state Model Number 3804

SCHEMATIC SYMBOL



3804

**MODEL 3804
MECHANICALLY
ACTUATED FOUR-WAY
BLOCK MOUNT VALVE**

DESCRIPTION

The 3804 is a mechanically actuated, sub-plate mounted four-way directional control valve. It is a poppet type valve consisting of two normally closed three-way valves with a common supply port. Movement of the desired spool stem into the valve opens the chosen three-way valve and directs the air supply to the chosen directional output.

Weight: 1.06 lb. (0.48 kg)

Materials: Die cast silicon bronze and stainless steel hardware

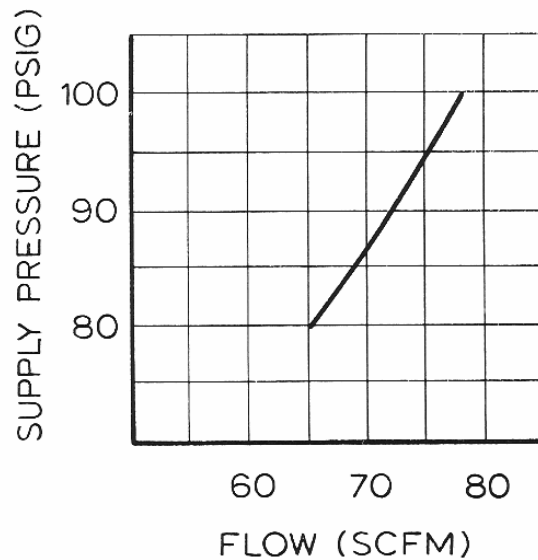
Maximum Supply Pressure: 250 PSI (17.24 BAR)

Operating Temperature Range: -40°C to +90°C

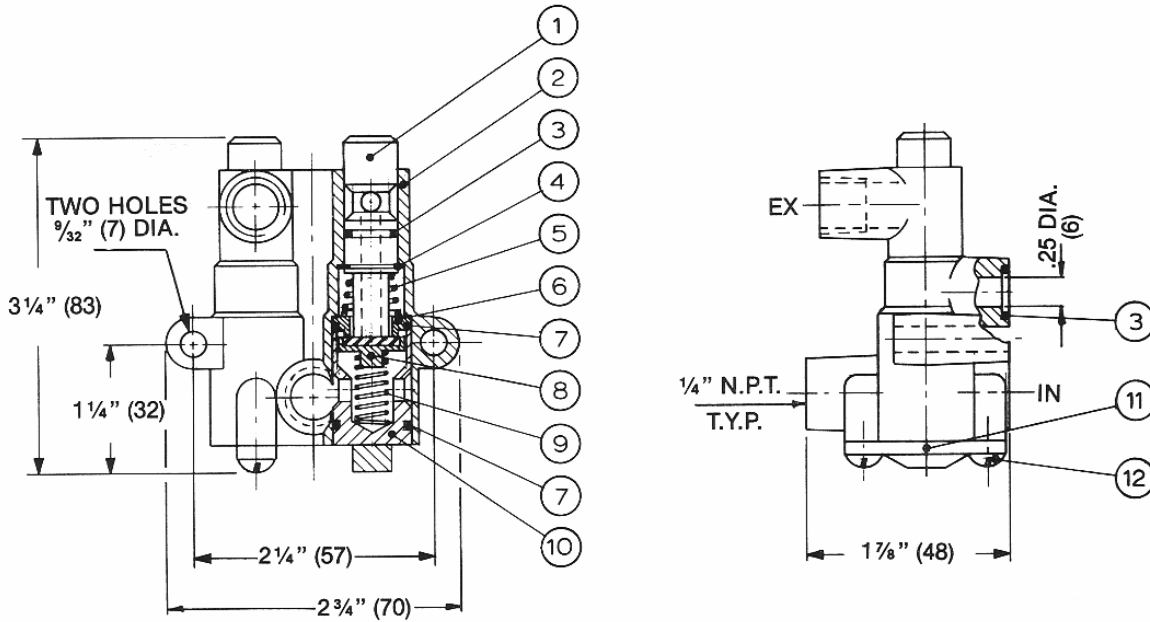
Spool Stem Travel: 0.25" (6 mm)

Sub-plate Ports: 1/4" dia.

SUPPLY PRESSURE VS. FLOW



DIMENSIONS AND PARTS 3804



ALL DIMENSIONS IN INCHES (MM)

3804

ITEM	QUANTITY	PART NUMBER	DESCRIPTION
1	2	3804-0001	Spool
2	1	3804-0002	Body
3	5	1101-0012	"O" Ring
4	2	1029-2050	Snap Ring
5	2	1201-0016	Spring
6	2	3804-0003	Seat
7	4	1101-0016	"O" Ring
8	2	3804-0004	Poppet
9	2	1201-0009	Spring
10	2	3804-0005	Retainer
11	2	3804-0006	End Cap
12	4	1010-0808	Screw

A Repair Kit is available consisting of all seals
Ordering No. 3804-RK

KOBELT MANUFACTURING
COMPANY LIMITED