

MODEL 5019-A FLUID APPLIED BRAKE CALIPER

This caliper was especially designed for medium and light duty applications, and is used in almost every industry. Because of its compact and rugged design, it can be fitted into very small spaces, and will do a superb job for years.

The usual Kobelt high quality engineering is all incorporated in this small brake. The caliper is equipped with balancing links to ensure even lining wear. Construction is all die-cast bronze and stainless steel. The 5019 is available in both foot mount and side mount configurations. When ordering, please specify your requirements.

SPECIFICATIONS

Clamping force	5250 lbf	(23.3 kN)
Max. disc thickness	0.75 in.	(20 mm)
Req. disc face	2 in.	(51 mm)
Total lining area	18 sq. in.	(116 sq. cm)
Lining thickness	0.312 in.	(8 mm)
Max. allowable lining wear	0.14 in.	(3.5 mm)
Average wear rate	0.005 cu. in./HP-hr	(0.082 c.c./HP-hr)
Coefficient of friction	0.45 – 0.5	at 20° - 260°C
Maximum pressure	100 psi	(6.9 bar)
Actuator volume	9 cu. in.	(147 cu. cm)
Weight	15 lb.	(6.8 kg)
Material	Die cast silicon bronze with stainless steel hardware	

IMPORTANT: Use only hydraulic fluid or air. Standard seals are NOT compatible with brake fluid.

STANDARD VENTILATED KOBELT DISCS: 0.750 in. (19 mm)

Disc Diameter	9	12	15	18	20
inches	9	12	15	18	20
mm	229	305	381	457	508
Acting Rad.					
ft	.291	.416	.541	.666	.750
meter	.089	.127	.165	.203	.229
Torque ‡					
ft-lb	764	1092	1420	1748	1969
kg-m	106	151	197	242	272
Maximum RPM	6150	4550	3600	3000	2680

‡ Brake torques are theoretical values only

ORDERING INFORMATION

5019-A	Fluid applied brake with standard foot
5019-AW	Fluid applied brake with side mount foot

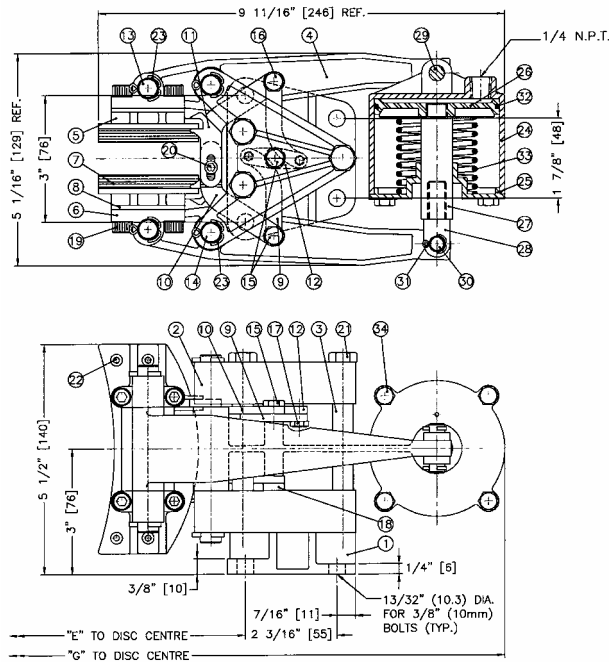
When ordering brake calipers for discs smaller than the standard thickness, add the last four digits of the appropriate shim kit. Example: 5019-A 0625 is for 5019-A caliper set for 5/8" thick disc.

A variety of custom made discs are available. For discs thinner than the standard thickness refer to the shim kit table below.

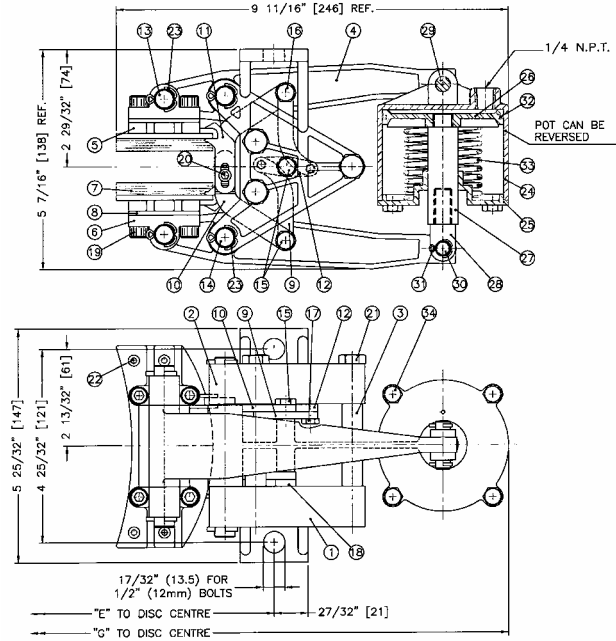
Max disc thickness	Part Number	Total shim size
0.625 in. (16 mm)	5019-0625	0.20 in. (5 mm) 1 shim per side
0.375 in. (10 mm)	5019-0375	0.40 in. (10 mm) 2 shims per side

MODEL 5019-A

FOOT MOUNT



SIDE MOUNT



All Dimensions in inches (mm)

Item	Qty	Part Number	Description
1	1	5019-0001	Foot
1	1*	5019-0102L	L.H. Saddle (Side mount)
2	2 *	5019-0002	Saddle
2	1 *	5019-0102R	R.H. Saddle (Side mount)
3	3	5019-0003	Spacer
4	2	5019-0004	Lever
5	2	5019-0005	Shoe
6	4	5019-0006	Hinge Block
7	2	5019-0007	Lining
8	*	5019-0008	Shim
9	2	5019-0010	Connecting Link
10	2	5019-0011	Balancing Link No. 1
11	2	5019-0012	Balancing Link No. 2
12	1	5019-0019	Centre Pivot Link
13	2	5019-0021	Shoe Pin
14	2	5019-0022	Saddle Pin
15	3	5019-0024	Shoulder Bolt
16	1	5019-0025	Shoulder Bolt
17	2	5019-0026	Shoulder Bolt
18	1	5019-0027	Spacer
19	8 *	1002-1112	Socket Hd. Cap Screw (standard)
19	8 *	1002-1116	Socket Hd. Cap Screw (5019-0625 shim kit)
20	2	1002-0808	Socket Hd Screw
21	3 *	1001-1280	Hex Hd Bolt
21	3 *	1001-1264	Hex Hd Bolt (Side mount)
22	12	1033-0806	Rivet
23	8	1026-0516	Cotter Pin

* Quantity may vary with options

Disc diameter		9	12	15	18	20
inches		9	12	15	18	20
mm		229	305	381	457	508
Dimension "E"						
inches		5.6	7.1	8.6	10.1	11.1
mm		143	181	219	257	282
Dimension "G"						
inches		11.8	13.3	14.8	16.3	17.3
mm		300	338	376	415	440
Dimension "H"						
inches		6.0	7.5	9.0	10.5	11.5
mm		152	191	229	267	292

6107 Fluid Applied Pot

Item	Qty	Part Number	Description
24	1	6107-0001	Piston Housing
25	1	6107-0002	End Cap
26	1	6107-0003	Piston
27	1	6107-0004	Piston Rod
28	1	6207-0005	Clevis
29	1	6112-0010-S	Pin
30	1	6207-0010S	Pin
31	4	1026-0312	Cotter Pin
32	1	1101-0232	"O" Ring
33	1	1201-0054	Spring
34	4	1001-1008	Hex Hd Cap Screw