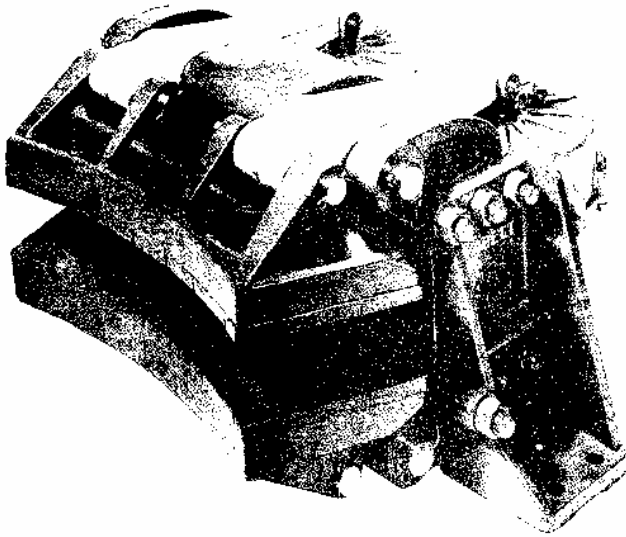


**AIR ACTUATED DISC BRAKES
CALIPER No. 5054
TWIN FOOT**



CALIPER

Total normal force	129,600 lb (58,909 Kg)
Total shoe area	480 in ² (3097 cm ²)
Allowable shoe wear	0.56 in (14 mm)
Maximum air pressure	100 psi (7.03 Kg/cm ²)
Maximum power input	1150 hp (857.0 Kw)
Assembly weight	1600 lb (727.3 Kg)

DESCRIPTION

Caliper model 5054 is available in an air applied type which utilizes two pairs of actuators mounted back-to-back. Each actuator consists of a piston mounted to a push-rod and a set of springs which return the brake to the off position when air pressure is lost.

This caliper is also available with a Fail-Safe actuator in which a number of springs apply the braking force when the air pressure is relieved from the actuator.

This caliper employs a balancing link interconnecting each brake shoe with its opposite control lever. This link equalizes the pressure applied by the shoes on both sides of the disc ensuring equal wear on both linings.

DISC — 4" (102 mm)

Disc Dia. In.	42.5	48.5	54.5	60.5	72.0	84.0	96.0
mm	(1079)	(1232)	(1384)	(1537)	(1829)	(2134)	(2438)
Acting Rad. ft.	1.33	1.58	1.83	2.08	2.54	3.04	3.54
mm	(405)	(482)	(558)	(634)	(774)	(927)	(1079)
Max. RPM	1300	1100	1000	900	700	600	500
*HP — Sec.	54,000	69,000	78,000	86,000	128,000	163,000	200,000
(Kw — Hr.)	(671.3)	(857.7)	(969.6)	(1069.0)	(1591.1)	(2026.2)	(2486.1)

**KOBELT BRAKES ARE PROTECTED
BY ONE OR MORE
OF THE FOLLOWING PATENTS:**

U.S. PATENT Nos.	CAN. PATENT Nos.
3722636	895693
3815471	922603
4013148	1069066
4060153	1072025
4164993	
4121697	
4108285	
4236608	

NOTE:

Specifications in metric units shown in parentheses.

* Figures are based on a continuous application of braking force. Allowable values will be higher for one-stop applications where disc is allowed to cool between uses.

For more detailed technical information refer to Kobelt's General Engineering section on disc brakes.

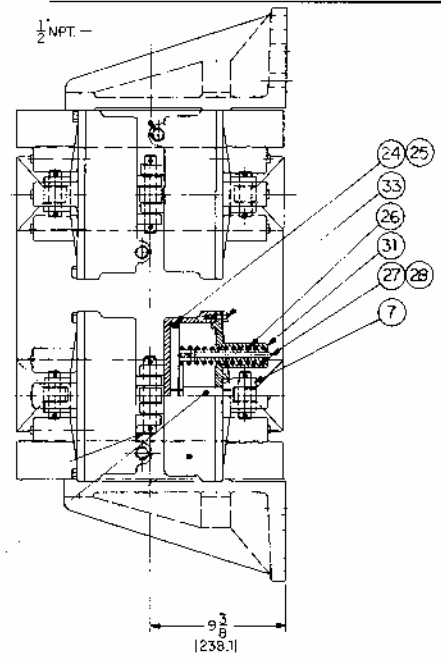
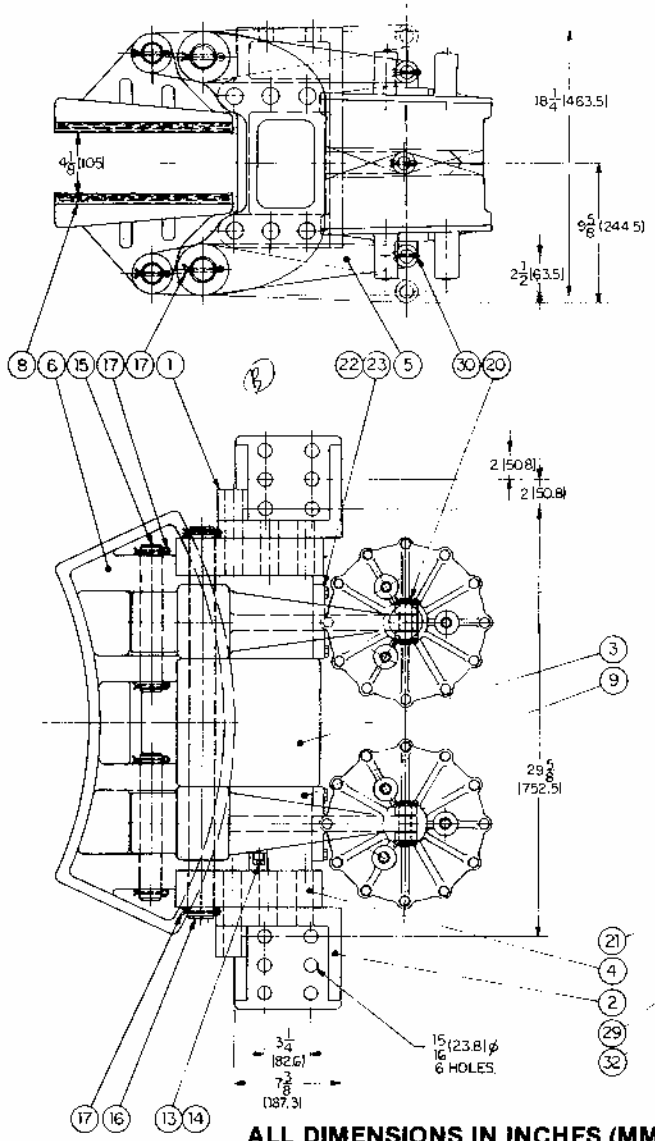
FURTHER PATENTS PENDING

DIMENSION AND PARTS

5054

5054

ITEM	QUANTITY	PART NUMBER	DESCRIPTION
1	1	5054-0001	Mounting bracket (RH)
2	1	5054-0002	Mounting bracket (LH)
3	1	5054-0003	Saddle centre
4	2	5054-0004	Saddle end
5	4	5054-0005	Lever
6	2	5054-0006	Brake shoe
7	4	5054-0007	Clevis
8	2	5054-0008	Lining
9	2	5054-0009	Saddle spacer
10	4	5054-0010	Tie rod
11	2	5054-0011	Tie rod
12	12	1022-0120	Tie rod nut
13	2	5054-0013	Balancing link
14	2	1001-1416	Capscrew
15	4	1035-24160	Shoe pin
16	2	1035-28432	Pivot pin
17	12	1026-1028	Cotter pin
18	48	1034-0116	Lining screw
19	48	1022-0110	Lining screw nut
20	4	1035-1644	Actuator pin
21	2	1035-1272	Actuator centre pin
22	2	5054-0022	Actuator mounting bracket
23	4	1001-1416	Capscrew
24	4	5054-0024	Piston
25	4	1101-0273	Piston O-Ring
26	12	1201-0060	Spring
27	12	5054-0027	Spring guide rod
28	12	1022-0211	Jam nut
29	4	5054-0029	Rod
30	12	1026-0820	Cotter pin
31	4	5054-0031	End cap
32	4	5054-0032	Actuator body
33	24	1001-1218	Hex hd. capscrew



ALL DIMENSIONS IN INCHES (MM)

NOTE: All data on this brake selection sheet are for reference and estimating purposes only. To ensure against the hazards of brake misapplication, the Customer is urged to fill out the Customer Application Data sheet and include it with each enquiry.