

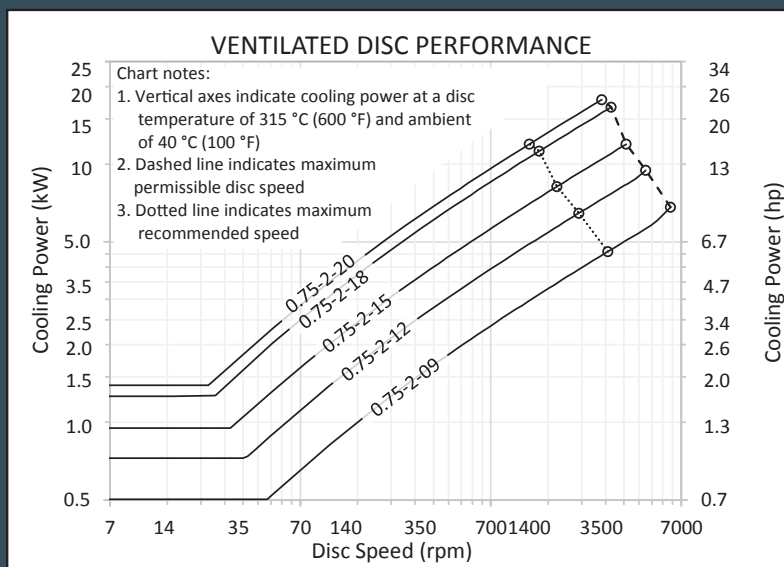
VENTILATED BRAKE DISCS 3/4" x 2" SERIES

KEY FEATURES

- Ideal for tensioning & controlled braking applications.
- Intended to be used with the 5019 caliper brake.
- Five sizes available.
- Supplied standard with rough stock bore. Custom mounting details available.
- Available in bronze.
- Available with balancing.

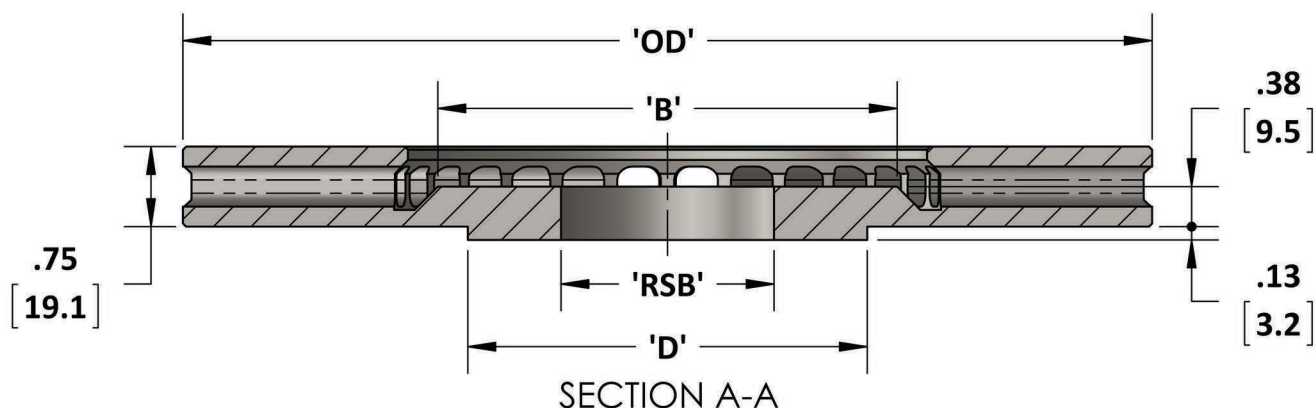
SPECIFICATIONS

DISC PART NO.	HEAT SINKING CAPACITY	
	(J/K)	(hp-sec/F)
0.75-2-09	1412	1.05
0.75-2-12	1928	1.44
0.75-2-15	2645	1.97
0.75-2-18	3003	2.24
0.75-2-20	3407	2.54



Note: Values in this chart are based on test data and empirical analysis. Appropriate derating factors must be included for cases of obstructed air flow such as covers and guards, as well as appropriate margins of safety to account for other uncertainties.

SPECIFICATIONS



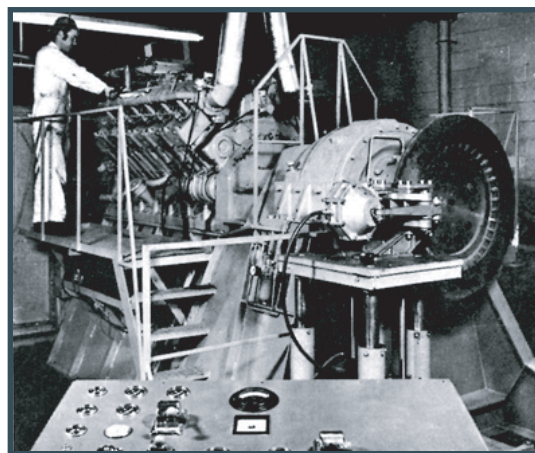
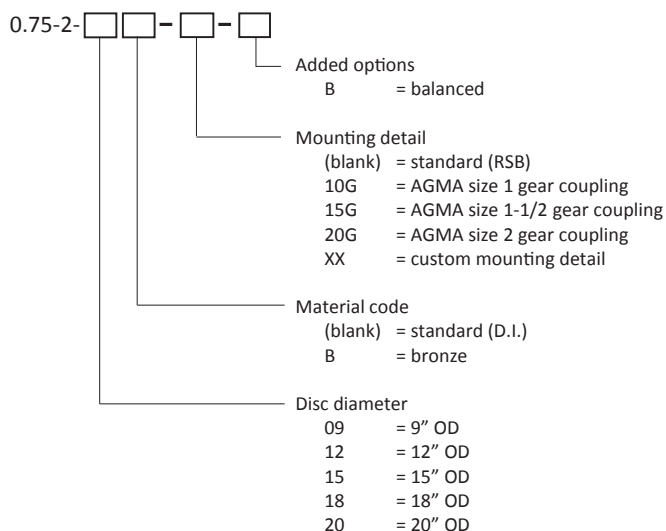
PART NO.	OD in [mm]	DIA 'B' in [mm]	RSB in [mm]	DIA 'D' in [mm]	MAX SPEED	INERTIA lbs-ft ² [kg-m ²]	WEIGHT lbs [kg]
0.75-2-09	9.10 [231]	4.3 [109]	2.00 [50.8]	3.75 [95.3]	6150 rpm	0.6 [.02]	8.1 [3.7]
0.75-2-12	12.10 [307]	7.3 [185]	2.00 [50.8]	5.00 [127.0]	4550 rpm	1.8 [.08]	13.5 [6.1]
0.75-2-15	15.10 [384]	10.4 [364]	2.00 [50.8]	6.00 [152.4]	3600 rpm	4.4 [.18]	21.0 [9.5]
0.75-2-18	18.19 [462]	13.5 [343]	2.00 [50.8]	7.00 [177.8]	3000 rpm	8.5 [.36]	28.8 [13.1]
0.75-2-20	20.10 [511]	15.5 [394]	2.06 [52.3]	8.00 [203.2]	2680 rpm	12.8 [.54]	35.7 [16.2]

Maximum Temperature: 700°F [371°C]

COUPLING FIT TABLE

PART NO.	1010G	1015G	1020G	1025G	1030G	1035G	1040G	1045G	1050G	1055G
0.75-2-09	x	x	x	x	x	x	x	x	x	x
0.75-2-12	✓	✓	✓	x	x	x	x	x	x	x
0.75-2-15	✓	✓	✓	✓	✓	x	x	x	x	x
0.75-2-18	✓	✓	✓	✓	✓	✓	✓	x	x	x
0.75-2-20	✓	✓	✓	✓	✓	✓	✓	✓	✓	x

Ventilated Disc Model Code Key



Kobelt founder conducting dynamometer testing.

8238 129th Street, Surrey, British Columbia, Canada, V3W 0A6

604.572.3935 • sales@kobelt.com • www.kobelt.com

KOBELT

PDS-0.75-2-XX_revB
02/2022