

5022-SA | SPRING APPLIED AIR RELEASED CALIPER DISC BRAKE



KEY BENEFITS

Bronze & stainless steel construction

Easy brake pad replacement

Well matched to Kobelt's standard range of 2" ventilated discs

Putting you in control.

For over three decades, Kobelt has been manufacturing rugged, durable disc brakes for the oil and gas, mining, material handling and manufacturing industries. Constructed of bronze and stainless steel, Kobelt's disc brakes are built to last in the harshest conditions.

Available with several options, these caliper disc brakes are well suited for parking or emergency braking duty on draw works, hoists, winches and more.

SPECIFICATIONS

PART NO.	NORMAL FORCE ¹	PRESSURES	
		RELEASE	HOLD-OFF
5022-SA	9040 lbs [40.2 kN]	102 psi [7.1 bar]	89 psi [6.2 bar]
5022-SA90	8170 lbs [36.4 kN]	87 psi [6.0 bar]	79 psi [5.4 bar]
5022-SA75	7120 lbs [31.7 kN]	76 psi [5.2 bar]	65 psi [4.5 bar]
5022-SA60	5720 lbs [25.4 kN]	62 psi [4.3 bar]	53 psi [3.7 bar]

Maximum Pressure: 250 psi [17.2 bar]

Port Size: ¼ NPT

Actuator Volume: 29.2 in³ [480 cc]

Temperature Range: -40°F...+120°F
-40°C...+49°C

Disc Thickness: 2 in [51 mm]

Max Running Clearance: .08 in [2 mm]

Minimum Disc Diameter: 20 in [508 mm]

Maximum Disc Diameter²: 60 in [1524 mm]

Weight: 102 lbs [46.3 kg]

$${}^1\text{Torque: } T_B = 2F_N\mu \left(\frac{OD-5.25}{24} \right)$$

Where:

T_B = brake torque (ft-lbf)

F_n = normal force (lbf)

μ = coefficient of friction

= 0.35 (nonferrous disc)

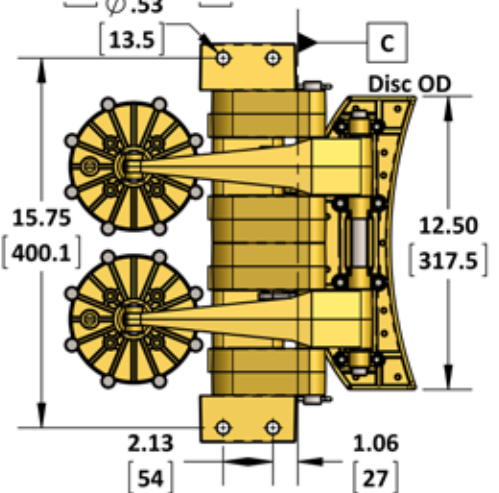
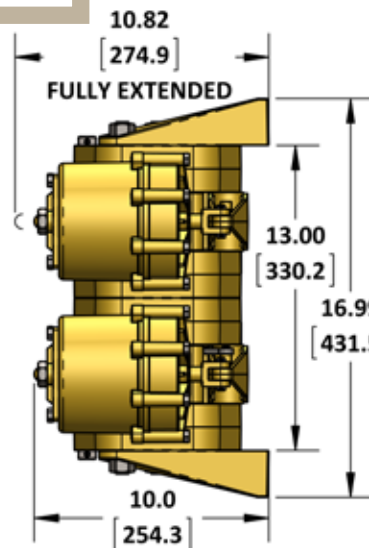
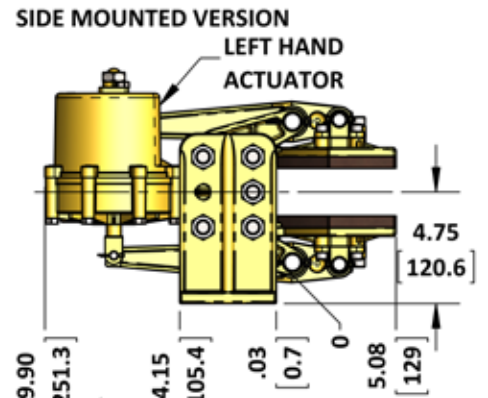
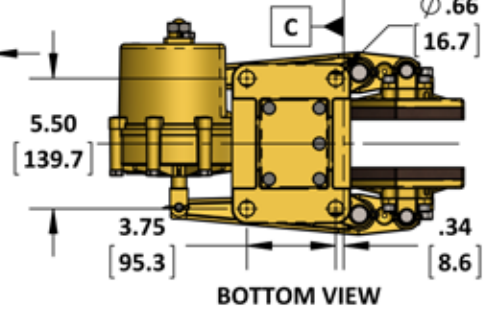
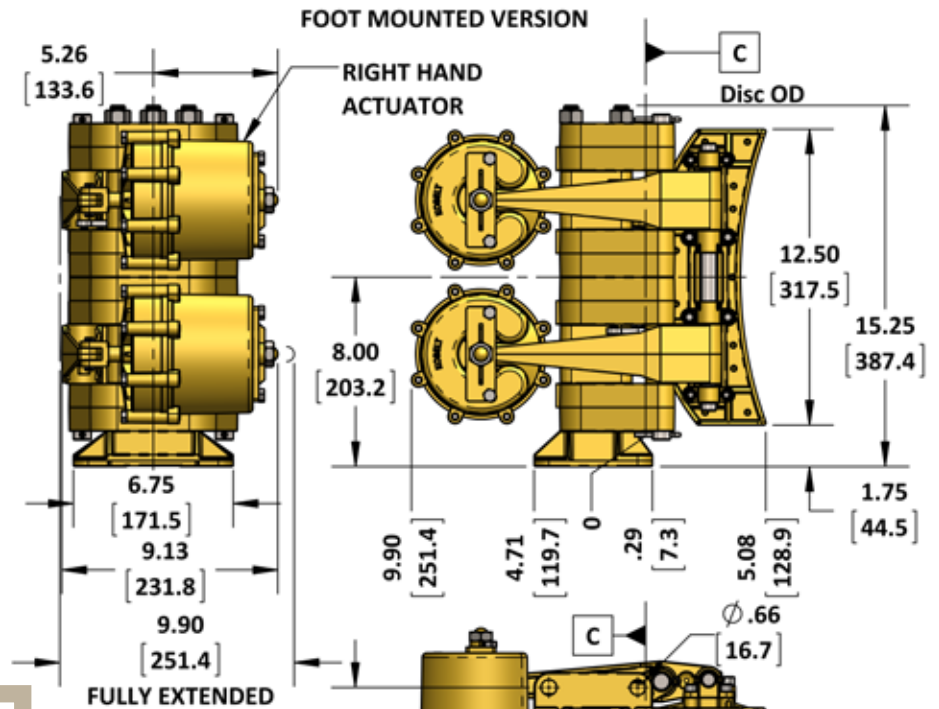
= 0.38 (steel disc)

= 0.41 (ferrous disc)

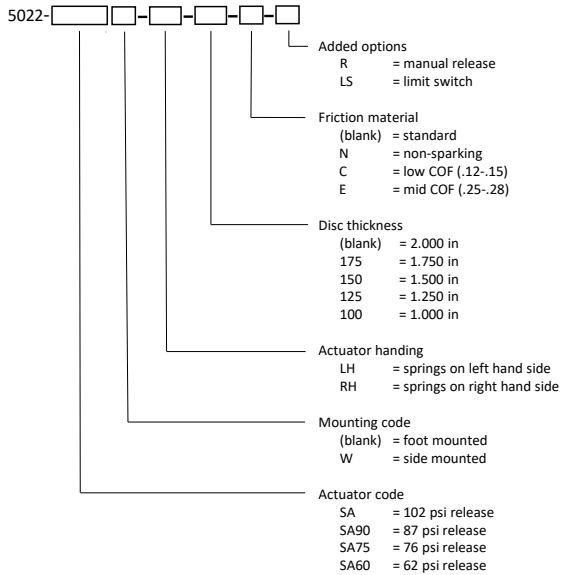
OD = brake disc diameter (in)

²Requires a minimum 4.34 in [110 mm] wide face

SPECIFICATIONS

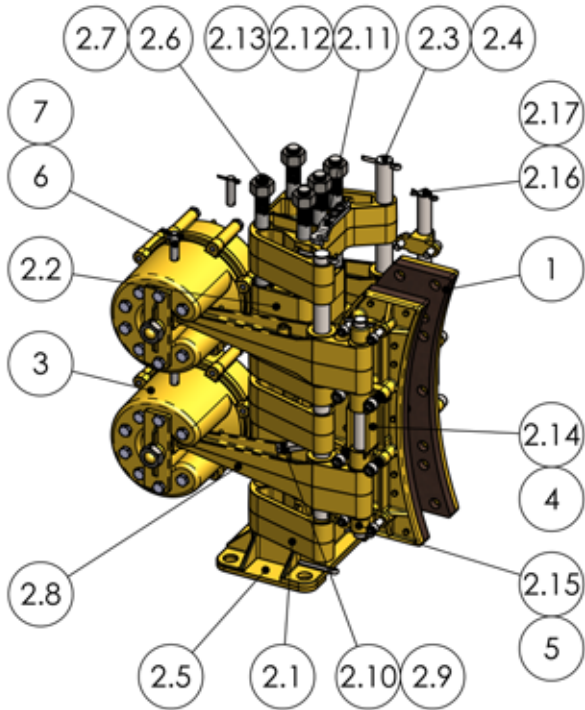


Brake Model Code Key

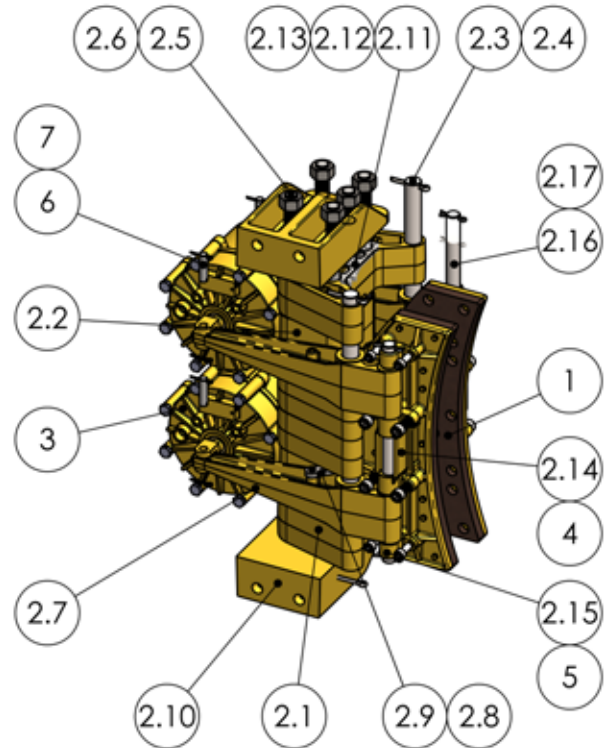


PARTS LISTING

5022-SA Caliper Brake



5022-SAW Caliper Brake

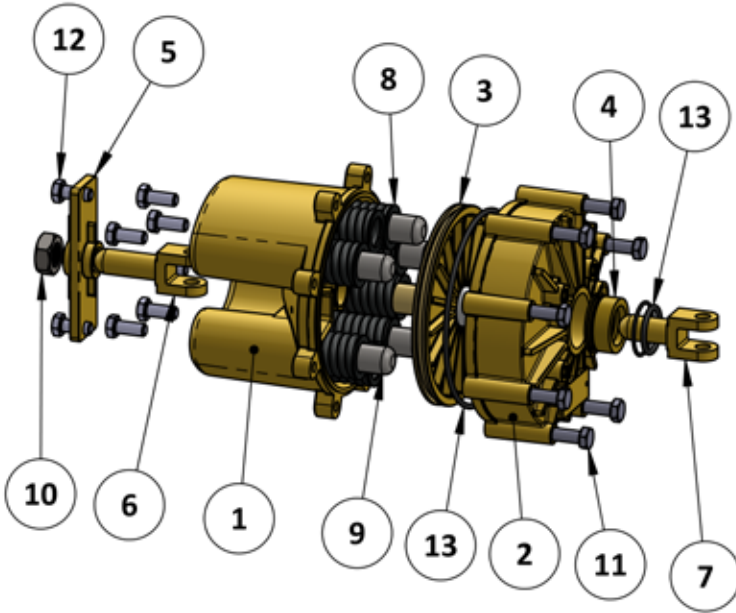


ITEM	QTY.	PART NUMBER	5022-SA DESCRIPTION
1	2	5022-LS	SHOE ASSEMBLY, 5022 CALIPER, 1/2 IN K5
2	1	5022-SUB	SUB-ASSEMBLY, 5022 CALIPER
2.1	4	5021-0002	SADDLE, 5021 CALIPER
2.2	2	5021-0003	SPACER, 5021 CALIPER
2.3	2	5022-0022	SADDLE PIN, 5022 CALIPER
2.4	4	1026-0824	COTTER PIN, 3/16 x 1 1/2, 18-8
2.5	1	5021-0001	FOOT
2.6	5	5022-0023	TIE ROD, 5022 CALIPER
2.7	5	1022-0116	HEX NUT - REGULAR; 5/8-11 UNC GR 18-8
2.8	4	5021-0004	LEVER, 5021 CALIPER
2.9	2	5021-0226	LINK PIN 5/16 UNC X 7/8 LG
2.10	2	5022-0011	BALANCING LINK, PART 1, 5022 CALIPER
2.11	2	5022-0112	BALANCING LINK, PART 2, 5022 CALIPER
2.12	4	1002-0808	SCREW, SKT HD CAP, #10 UNC x 1/2 LG, SS
2.13	4	1023-0108	WASHER FLAT #10 TYPE A SS
2.14	2	5022-0013	CENTRE BEARING
2.15	4	5022-0014	OUTSIDE BEARING
2.16	2	5022-0021	SHOE PIN, 5022 CALIPER
2.17	4	1026-0516	COTTER PIN; 1/8 DIA X 1 LG. 18-8
3	2	6212	SPRING APPLIED ACTUATOR, 6212
4	8	1002-1216	SCREW, SKT HD CAP, 3/8-16 UNC X 1, SS
5	8	1002-1112	SCREW, SKT HD, 5/16-18 X 3/4, 18-8
6	4	6112-0010-L	PIN, LONG, 6112 ACTUATOR
7	8	1026-0312	COTTER PIN 3/32 X 3/4 SS

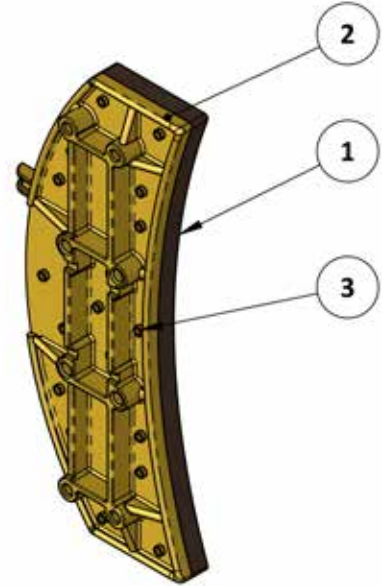
ITEM	QTY.	PART NUMBER	5022-SAW DESCRIPTION
1	2	5022-LS	SHOE ASSEMBLY, 5022 CALIPER, 1/2 IN K5
2	1	5022-SUB-W	SUB-ASSEMBLY, 5022 CALIPER
2.1	4	5021-0002	SADDLE, 5021 CALIPER
2.2	2	5021-0003	SPACER, 5021 CALIPER
2.3	2	5022-0022	SADDLE PIN, 5022 CALIPER
2.4	4	1026-0824	COTTER PIN, 3/16 x 1 1/2, 18-8
2.5	5	5022-0023	TIE ROD, 5022 CALIPER
2.6	10	1022-0116	HEX NUT - REGULAR; 5/8-11 UNC GR 18-8
2.7	4	5021-0004	LEVER, 5021 CALIPER
2.8	2	5021-0226	LINK PIN 5/16 UNC X 7/8 LG
2.9	2	5022-0011	BALANCING LINK, PART 1, 5022 CALIPER
2.10	2	5021-0101	SIDE MOUNT BRACKET, 5021 CALIPER
2.11	2	5022-0112	BALANCING LINK, PART 2, 5022 CALIPER
2.12	4	1002-0808	SCREW, SKT HD CAP, #10 UNC x 1/2 LG, SS
2.13	4	1023-0108	WASHER FLAT #10 TYPE A SS
2.14	2	5022-0013	CENTRE BEARING
2.15	4	5022-0014	OUTSIDE BEARING
2.16	2	5022-0021	SHOE PIN, 5022 CALIPER
2.17	4	1026-0516	COTTER PIN; 1/8 DIA X 1 LG. 18-8
3	2	6212	SPRING APPLIED ACTUATOR, 6212
4	8	1002-1216	SCREW, SKT HD CAP, 3/8-16 UNC X 1, SS
5	8	1002-1112	SCREW, SKT HD, 5/16-18 X 3/4, 18-8
6	4	6112-0010-L	PIN, LONG, 6112 ACTUATOR
7	8	1026-0312	COTTER PIN 3/32 X 3/4 SS

PARTS LISTING

6212 Actuator



5022-LS Caliper Brake



ITEM	QTY.	PART NUMBER	6212 DESCRIPTION
1	1	6212-0001	SPRING HOUSING
2	1	6212-0002	PISTON HOUSING
3	1	6212-0003-K	PISTON, CHROMED
4	1	6212-PHB	PISTON HOUSING BUSHING
5	1	6212-0004	MOUNTING BRACKET FOR LEVER
6	1	6212-0005-L	CLEVIS, LONG, 5/8 UNC X 3/8 PIN
7	1	6212-0005-S	CLEVIS, SHORT, 5/8 UNC X 3/8 PIN
8	8	1201-0035	SPRING: 4412 HEAVY BLACK
9	6	6212-0016	SPRING GUIDE (HEAVY)
10	1	1022-0216	NUT, JAM, 5/8-11, SS
11	8	1001-1136	SCREW, HX HD CAP, 5/16-18 X 2-1/4, 18-8
12	8	1001-1112	SCREW HEX HEAD, 5/16-18 X 3/4, 18-8
13	1	6212-RK	SEAL KIT, 6212 ACTUATOR

ITEM	QTY.	PART NUMBER	5022-LS DESCRIPTION
1	1	5022-0007	BRAKE PAD; 1/2IN K5
2	1	5022-0005	BRAKE SHOE
3	19	1033-1007	RIVET, 1/4 X 7/16 (10-7), BRASS

Note: Parts lists are applicable to standard models only.