

5026-A

AIR APPLIED CALIPER DISC BRAKE



KEY BENEFITS

Bronze & stainless steel construction

Easily changed brake pads

Well matched to Kobelt's standard range of 4" x 7" ventilated discs

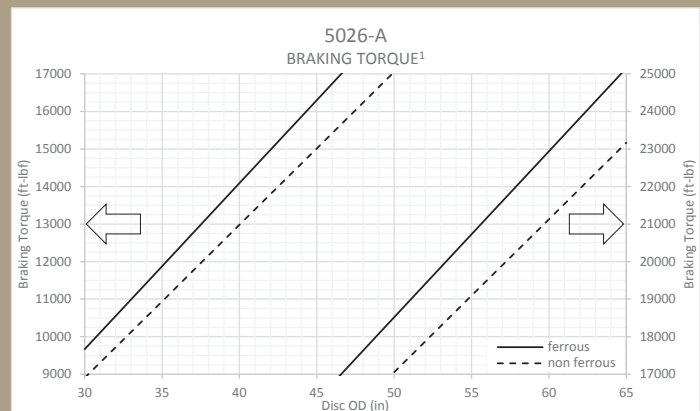
Putting you in control.

For over three decades, Kobelt has been manufacturing air applied disc brakes using a double diaphragm design for accurate braking control. Constructed of bronze and stainless steel, Kobelt's disc brakes are built to last in the harshest conditions.

Available with several options, these caliper disc brakes are well suited for service braking applications on drawworks, work boats and more.

SPECIFICATIONS

Normal Force:	13,970 lbs	[61.2 KN]
Maximum Pressure:	100 psi	[6.9 bar]
Port Size:	¼ NPT	
Actuator Volume:	60 in ³	[983 cc]
Temperature Range:	-40°F...+131°F -40°C...+55°C	
Disc Thickness:	4 in	[102 mm]
Minimum Disc Diameter:	30 in	[762 mm]
Maximum Disc Diameter ² :	61 in	[1549 mm]
Pad Life:	9900 hp-hr	[7390 kw-hr]
Total Pad Area:	175 in ²	[1128 cm ²]
Weight:	219 lbs	[99.4 kg]

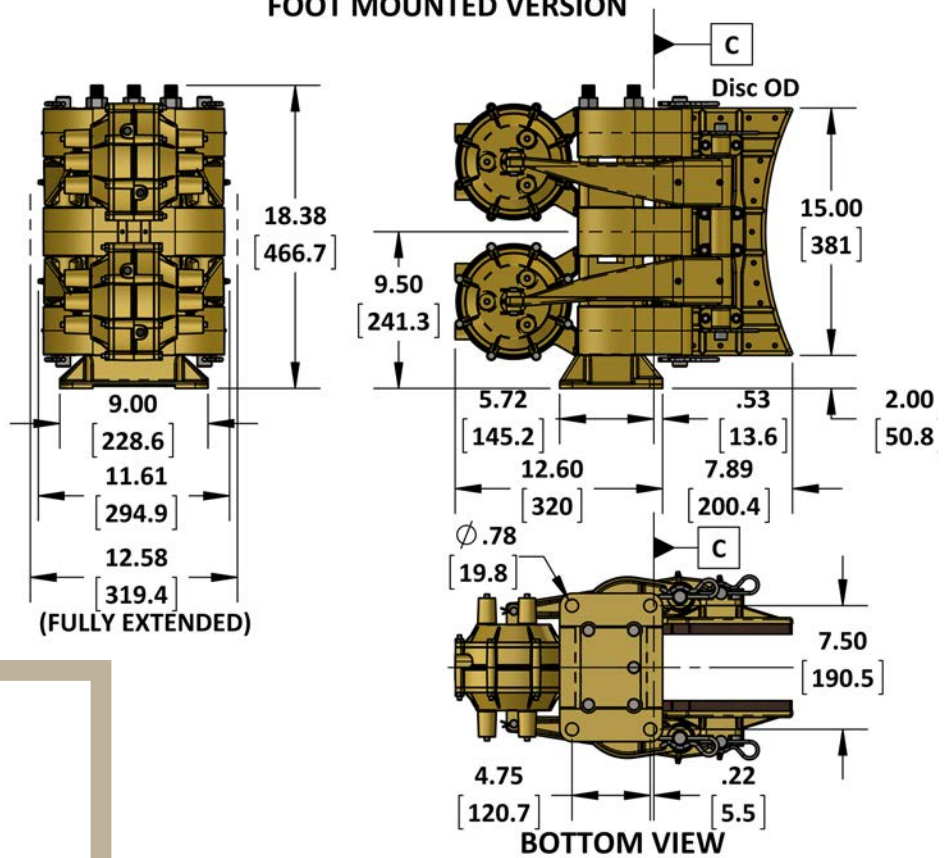


¹ Values in this chart are theoretical and for reference only. They are based on properly bedded and burnished linings acting on a ductile iron rotor at 20°C and manufactured to required specifications.

² Requires a minimum 7.28 in [185 mm] wide face.

SPECIFICATIONS

FOOT MOUNTED VERSION



Brake Model Code Key

5026-A - -

Friction material

- (blank) = standard
- N = non-sparking
- C = low COF (.12-.15)
- E = mid COF (.25-.28)

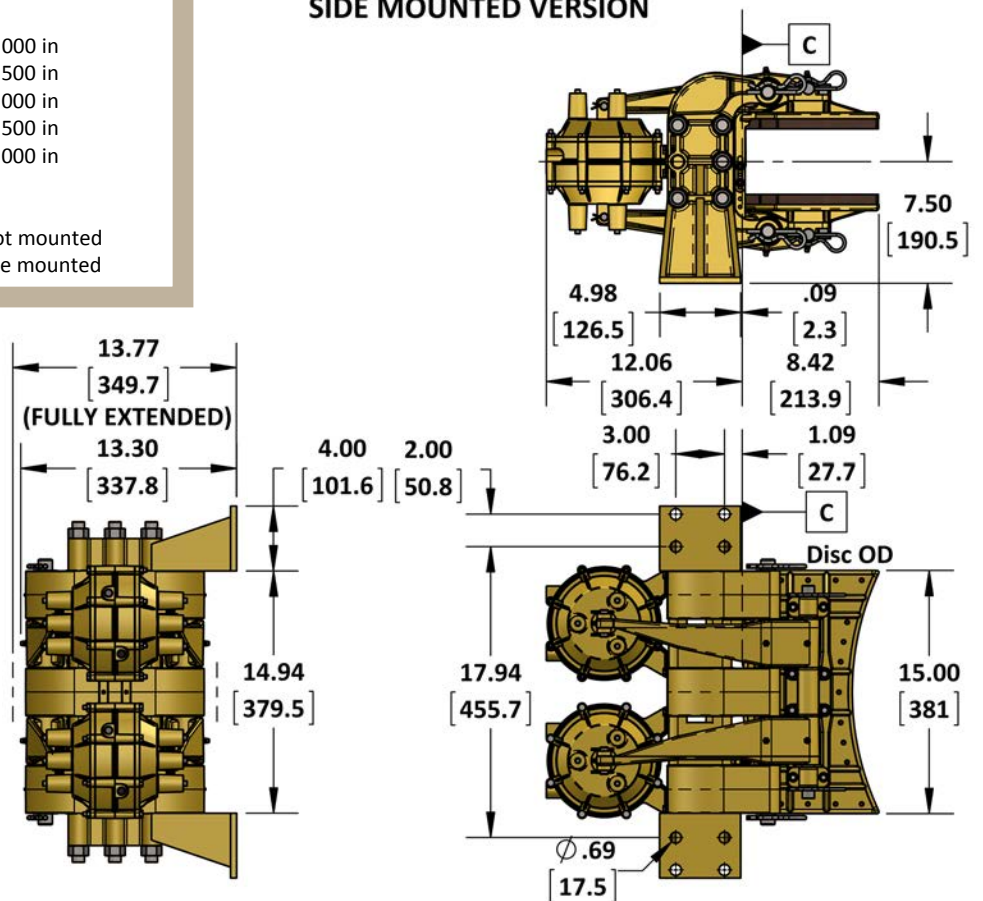
Disc thickness

- (blank) = 4.000 in
- 350 = 3.500 in
- 300 = 3.000 in
- 250 = 2.500 in
- 200 = 2.000 in

Mounting code

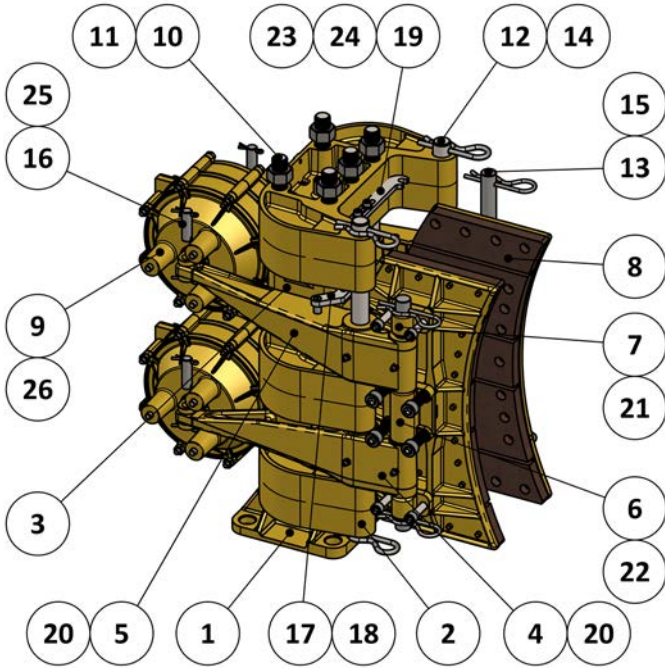
- (blank) = foot mounted
- W = side mounted

SIDE MOUNTED VERSION

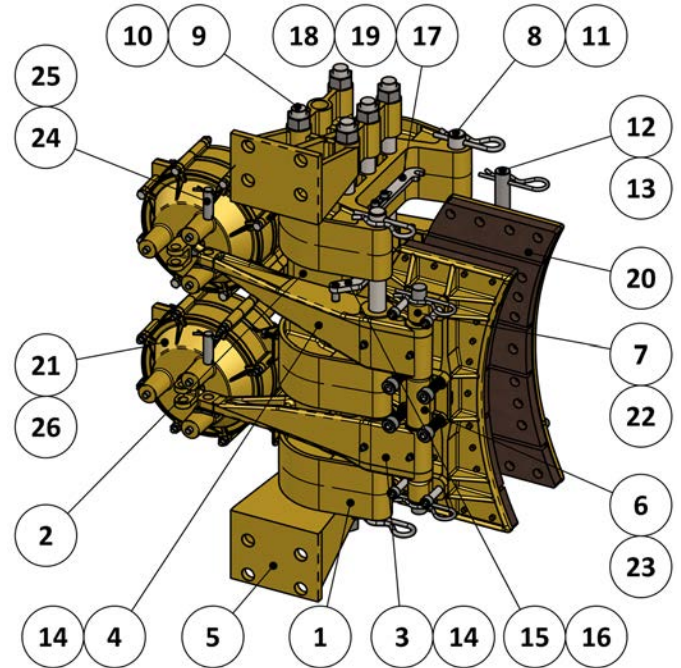


PARTS LISTING

5026-A Caliper Brake



5026-AW Caliper Brake

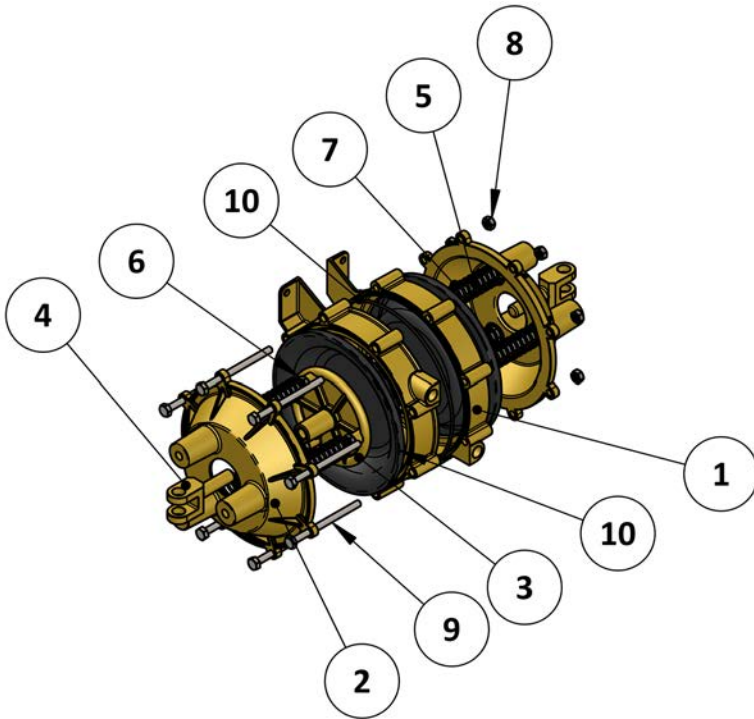


ITEM	QTY.	PART NUMBER	5026-A DESCRIPTION
1	1	5025-0001	BRAKE FOOT, 5025 CALIPER
2	3	5025-0002	SADDLE, 5025 CALIPER
3	2	5026-0003	SPACER, 5026 CALIPER
4	2	5026-0004-R	LEVER, RIGHT, 5026 CALIPER, DIE CAST
5	2	5026-0004-L	LEVER, LEFT, 5026 CALIPER, DIE CAST
6	2	5026-0013	PIVOT BLOCK, CENTER, 5026 CALIPER
7	4	5026-0014	PIVOT BLOCK, OUTER, 5026 CALIPER
8	2	5026-LS	SHOE ASSEMBLY, 5/8" K5, 5026 CALIPER
9	2	6120	AIR APPLIED ACTUATOR, 6120
10	5	5027-0023	TIE ROD, 5026 & 5027 CALIPER
11	5	1022-0117	NUT, HEX, 3/4-10 UNC, Gr 18-8
12	2	5026-0028	PIVOT PIN, 5026/28 CALIPERS
13	2	5026-0027	SHOE PIN, 5026 CALIPER
14	4	1039-0470	PIN, HAIRPIN COTTER, 1/4 X 4-1/4, STEEL
15	4	1039-0352	HITCH PIN, 5/16 X 4, STEEL
16	4	6230-0010	CLEVIS PIN, 1/2" DIA
17	2	5025-0011	BALANCING LINK, PIVOT END
18	2	5024-0026	LINK PIN, 5024 - 5026 CALIPERS
19	2	5025-0012	BALANCING LINK, FORK END, 5025 CALIPER
20	8	1501-0301	GREASE NIPPLE, 1/4-28
21	8	1002-1220	SCREW, SKT HD, 3/8-16 UNC X 1-1/4, SS
22	8	1002-1420	SCREW, SKT HD, 1/2-13 UNC X 1-1/4, SS
23	4	1023-0216	FLAT WASHER, 1/4, TYPE B, NARROW
24	4	1002-1010	SCREW, SKT HD, 1/4 UNC X 5/8 LG, 18-8 SS
25	8	1026-0516	COTTER PIN, 1/8" X 1", SS
26	8	1001-1008	SCREW, HEX HD, 1/4-20 UNC X 1/2, SS

ITEM	QTY.	PART NUMBER	5026-AW DESCRIPTION
1	3	5025-0002	SADDLE, 5025 CALIPER
2	2	5026-0003	SPACER, 5026 CALIPER
3	2	5026-0004-R	LEVER, RIGHT, 5026 CALIPER, DIE CAST
4	2	5026-0004-L	LEVER, LEFT, 5026 CALIPER, DIE CAST
5	2	5026-0060	BRACKET, SIDEWALL MOUNT, 5025/5026
6	2	5026-0013	PIVOT BLOCK, CENTER, 5026 CALIPER
7	4	5026-0014	PIVOT BLOCK, OUTER, 5026 CALIPER
8	2	5026-0028	PIVOT PIN, 5026/28 CALIPERS
9	5	5026-0124	Tie Rod - side mount for -AW
10	10	1022-0117	NUT, HEX, 3/4-10 UNC, Gr 18-8
11	4	1039-0470	PIN, HAIRPIN COTTER, 1/4 X 4-1/4, STEEL
12	2	5026-0027	SHOE PIN, 5026 CALIPER
13	4	1039-0352	HITCH PIN, 5/16 X 4, STEEL
14	8	1501-0301	GREASE NIPPLE, 1/4-28
15	2	5025-0011	BALANCING LINK, PIVOT END
16	1	5024-0026	LINK PIN, 5024 - 5026 CALIPERS
17	2	5025-0012	BALANCING LINK, FORK END, 5025 CALIPER
18	4	1023-0216	FLAT WASHER, 1/4, TYPE B, NARROW
19	4	1002-1010	SCREW, SKT HD, 1/4 UNC X 5/8 LG, 18-8 SS
20	2	5026-LS	SHOE ASSEMBLY, 5/8" K5, 5026 CALIPER
21	2	6120	AIR APPLIED ACTUATOR, 6120
22	8	1002-1220	SCREW, SKT HD, 3/8-16 UNC X 1-1/4, SS
23	8	1002-1420	SCREW, SKT HD, 1/2-13 UNC X 1-1/4, SS
24	4	6230-0010	CLEVIS PIN, 1/2" DIA
25	8	1026-0516	COTTER PIN, 1/8" X 1", SS
26	8	1001-1008	SCREW, HEX HD, 1/4-20 UNC X 1/2, SS

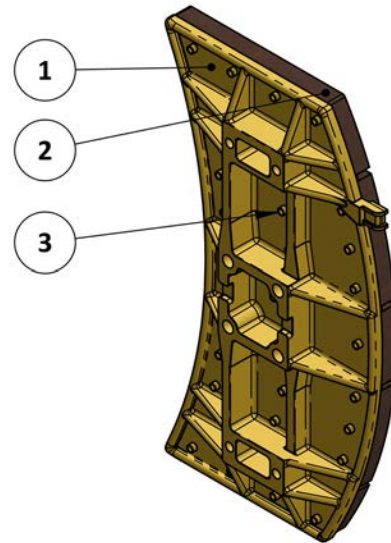
PARTS LISTING

6120 Actuator



ITEM	QTY.	PART NUMBER	6120 DESCRIPTION
1	2	6120-0003	CENTRE HOUSING, 6120 ACTUATOR
2	2	6120-0002	END CAP, 6120 ACTUATOR
3	2	6120-0004	DIAPHRAGM WASHER, 6120 ACTUATOR
4	2	6120-0001	CLEVIS, 6120 ACTUATOR
5	6	6120-0005	GUIDE PIN, 6120 ACTUATOR
6	6	1022-0211	NUT, JAM, 5/16-18 UNC, SS
7	6	1201-0185	SPRING, COMPRESSION, .83ODX.08 WIREX4.43
8	8	1022-0110	NUT, HEX, 1/4-20 UNC, SS
9	8	1001-1056	BOLT, HX HD, 1/4-20 UNC X 3.5", SS
10	1	6120-RK	REPAIR KIT, AIR APPLIED ACTUATOR

5026-LS



ITEM	QTY.	PART NUMBER	5026-LS DESCRIPTION
1	1	5026-0005	SHOE, 5026 CALIPER
2	1	5026-0007-K	LINING, 5/8" K5, 5026 CALIPER
3	29	1033-1007	RIVET, 1/4 X 7/16 (10-7), BRASS

Note: Parts lists are applicable to standard models only.