

MODEL 7169 JOYSTICK

Kobelt's model 7169 joystick is a compact, single axis input device ideally suited for marine and harsh industrial applications. Manufactured from bronze and stainless steel the product is protected from water ingress by a UV resistant rubber boot.

Moving the lever forward or aft operates the potentiometer and can also operate a SPDT micro-switch in the mid-position.

The unit can be configured to have various output options to suit the user's control needs such as bow thruster, steering gear, winch control, hydraulic servo devices, C.P. propulsion and throttle controls. The handle can also be configured with either spring return to mid-position (neutral detent) or with friction to retain the lever in any position.

POTENTIOMETER OUTPUT

<u>Handle Position</u>		<u>Output</u>
-30 deg	REV	12.5%
0 deg	NEU	50%
30 deg	FWD	87.5%



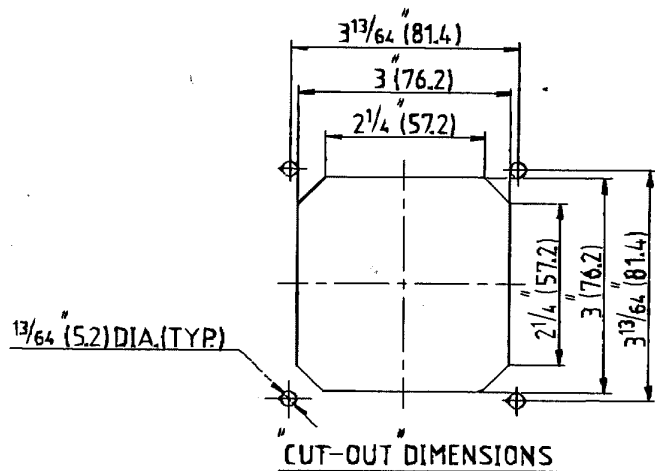
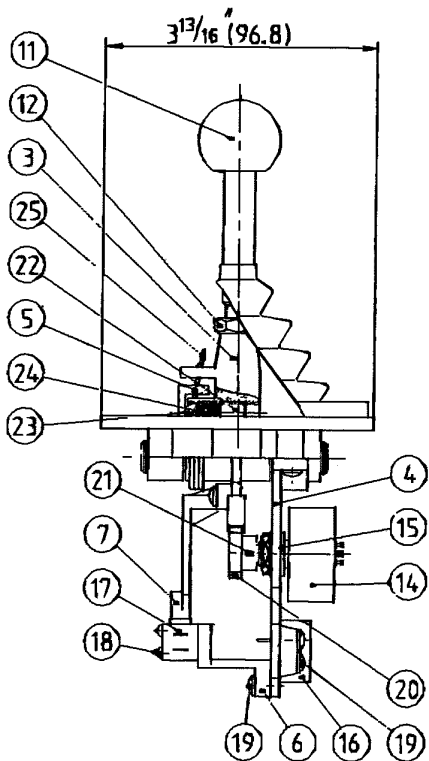
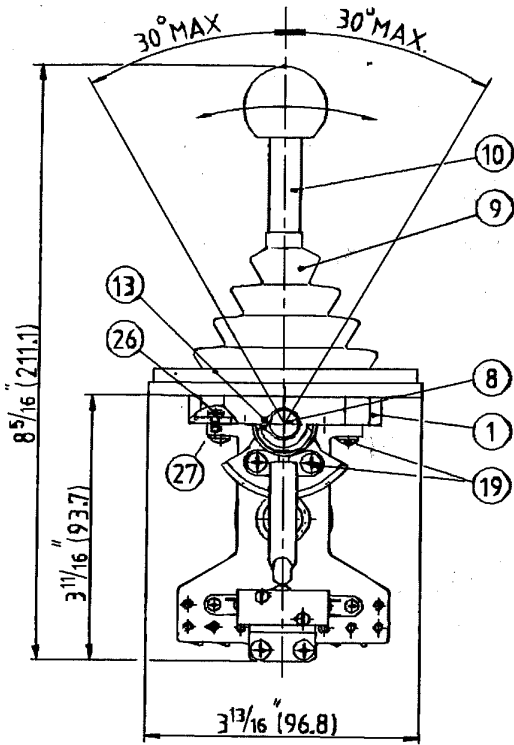
ORDERING OPTIONS

- A Center Detent¹
- B Spring Return
- C Switch
- D 1K Potentiometer
- E Terminal Strip
- F Two Switches
- G Jog Switches option
- H 5K Potentiometer
- W Friction¹

1) option is limited to either a center detent or friction

Weight: 2 lb. (0.9 kg)

DIMENSIONS AND PARTS MODEL 7169



ITEM	QTY	PART NUMBER	DESCRIPTION
1	1	7169-0001	Main Plate
3	1	7169-0003	Lever Hub
4	1	7169-0004	Support
5	1	7169-0005	Spring Retainer
6	1	7169-0006	Switch Bracket
7	1	7169-0007	Switch Actuator
8	1	7169-0008	Pin
9	1	7169-0009	Rubber Boot
10	1	7169-0010	Lever
11	1	2030-0001	Knob
12	1	1022-0211	Hex Nut
13	2	1029-1037	Snap Ring
14	1	POT-1	Potentiometer - 1K
15	1	7169-0015	Washer
16	1	6009-0006	Connector terminal
17	1	6001-0104	Micro switch
18	2	1006-0310	Pan Hd. Slotted Screw
19	12	1012-0606	Round Hd. Philips Screw
20	1*	Y-3216	Spur Gear
21	1	1016-0602	Socket Set Screw
22	1	1016-1206	Socket Set Screw
23	1	2012-0007	Detent Pin
24	1	1201-0003	Spring
25	1	1203-0011	Spring
26	2	1022-0106	Hex Nut
27	2	1016-0608	Stop Screw