

# 5023-H | HYDRAULIC APPLIED CALIPER DISC BRAKE

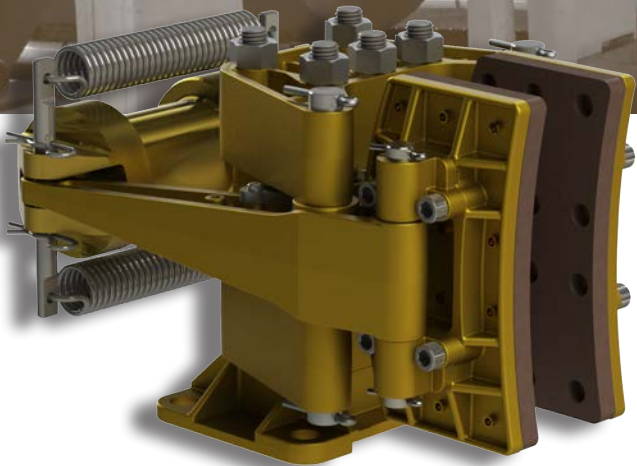


## KEY BENEFITS

Bronze & stainless steel construction

Easily changed brake pads

Well matched to Kobelt's standard range of 2" ventilated discs



## Putting you in control.

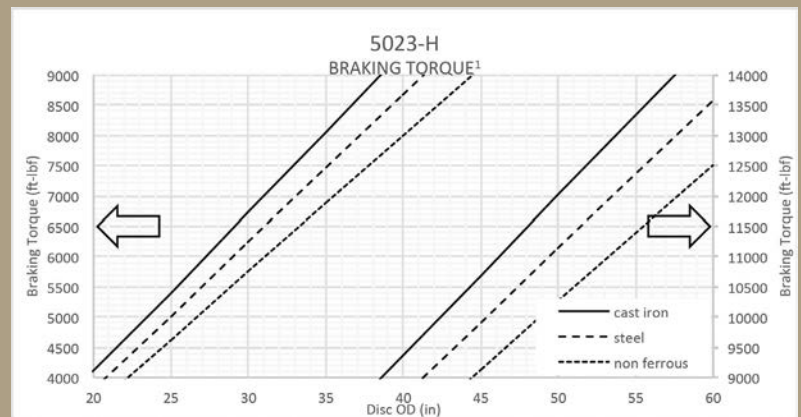
Constructed entirely of bronze and stainless steel, Kobelt's hydraulic applied disc brakes are built to last in the harshest, most corrosive conditions.

The brake features a shoe design which allows the brake pads to be easily and quickly changed while leaving the caliper in place.

Available with several options, these caliper disc brakes are well suited for service braking applications in the oil and gas, mining, material handling and manufacturing industries.

## SPECIFICATIONS

Normal Force:	0...7730 lbs	[34.4 KN]
Maximum Pressure:	1000 psi	[69 bar]
Port Size:	-4 ORB	
Actuator Volume:	1.3 in <sup>3</sup>	[22 cc]
Temperature Range:	-40°F...+130°F	
	-40°C...+54°C	
Disc Thickness:	2 in	[51 mm]
Minimum Disc Diameter:	20 in	[508 mm]
Maximum Disc Diameter <sup>2</sup> :	60 in	[1524 mm]
Pad Life:	1042 hp-hr	[777 kw-hr]
Weight:	59 lbs	[26.8 kg]

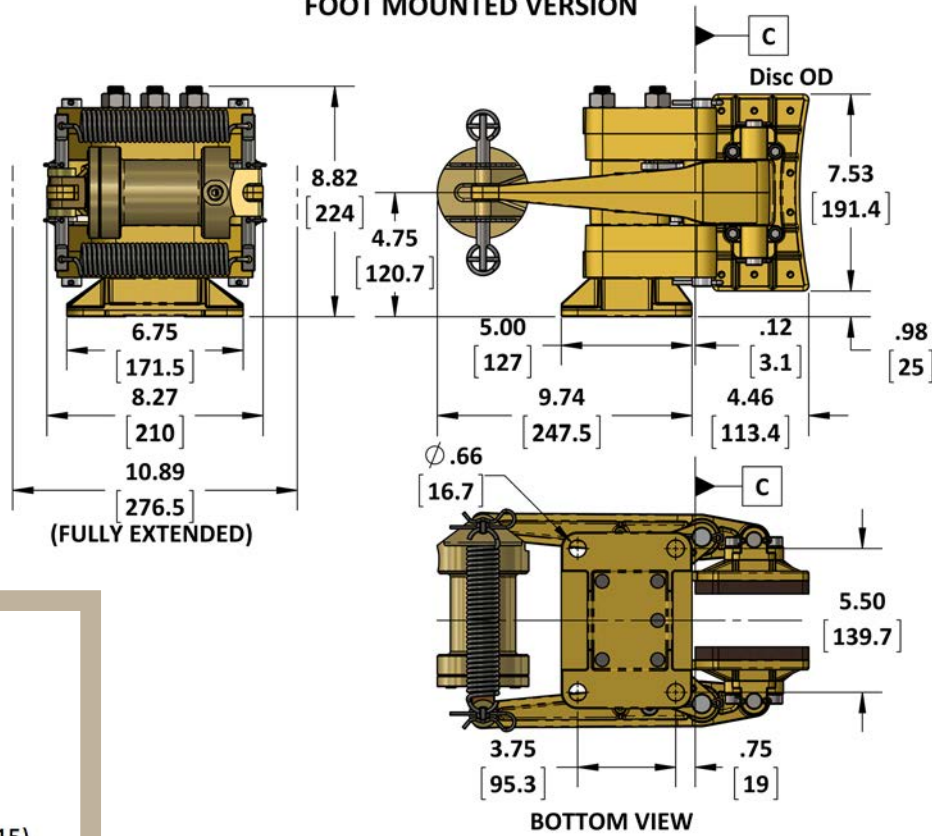


<sup>1</sup> Values in this chart are theoretical and for reference only. They are based on properly bedded and burnished linings acting on a rotor at 20°C and manufactured to required specifications.

<sup>2</sup> Requires a minimum 4.34 in [110 mm] wide face.

# SPECIFICATIONS

## FOOT MOUNTED VERSION



### Brake Model Code Key

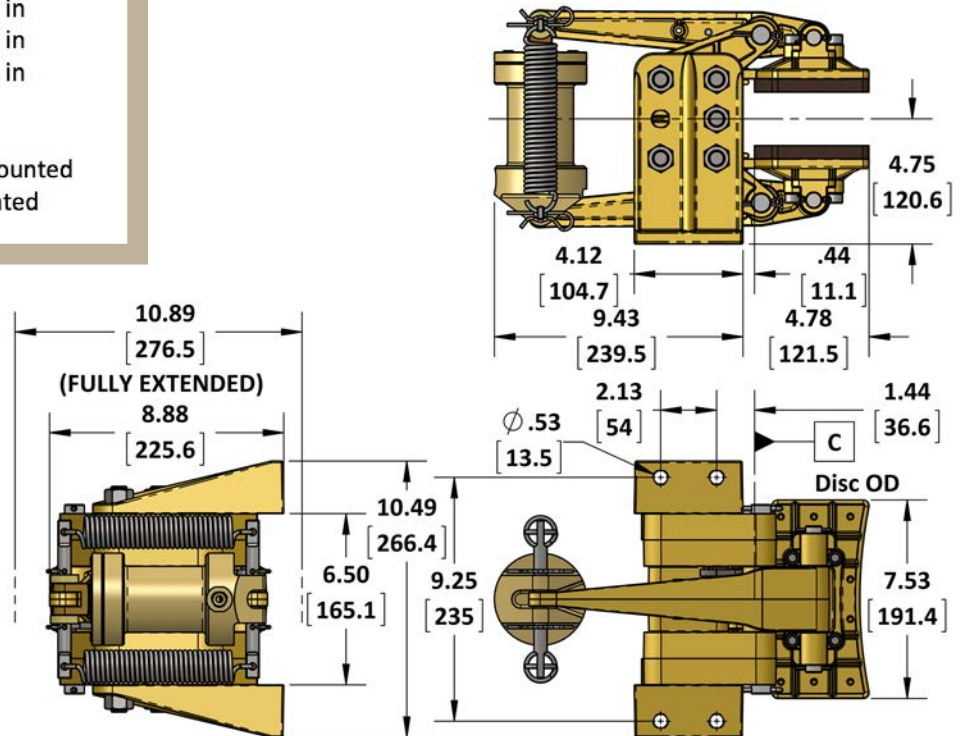
5023-H

Friction material  
 (blank) = standard  
 N = non-sparking  
 C = low COF (.12-.15)  
 E = mid COF (.25-.28)

Disc thickness  
 (blank) = 2.000 in  
 175 = 1.750 in  
 150 = 1.500 in  
 125 = 1.250 in  
 100 = 1.000 in

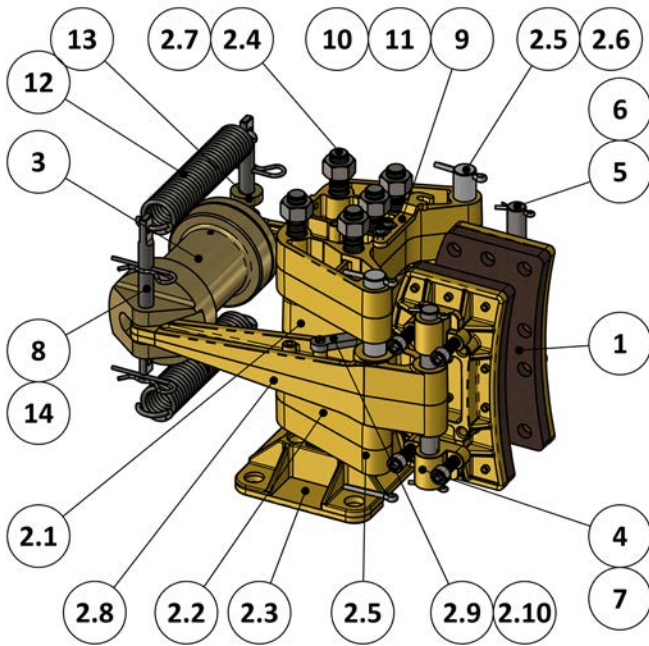
Mounting code  
 (blank) = foot mounted  
 W = side mounted

## SIDE MOUNTED VERSION

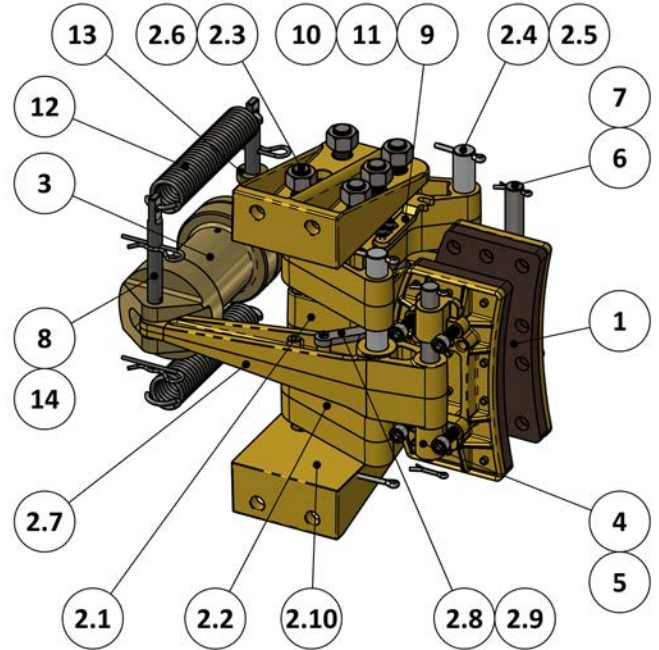


# PARTS LISTING

## 5023-H Caliper Brake



## 5023-HW Caliper Brake

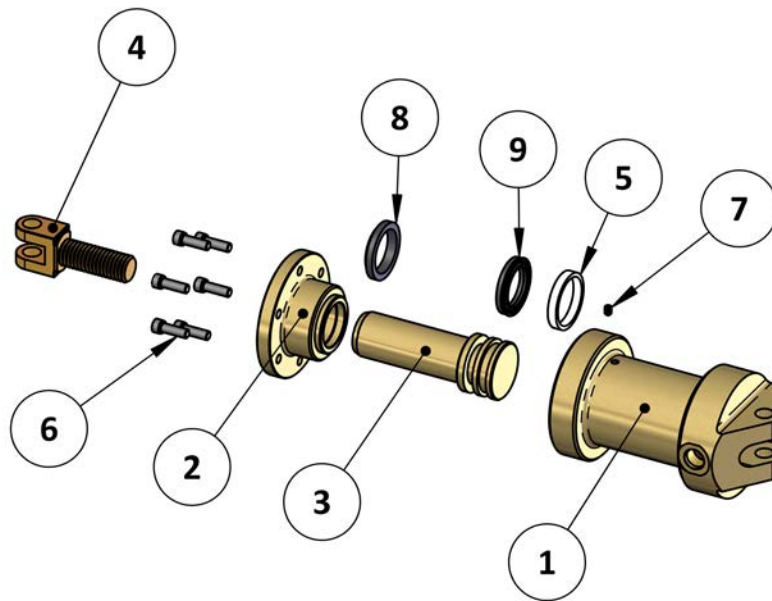


ITEM	QTY.	PART NUMBER	5023-H DESCRIPTION
1	2	5021-LS	SHOE ASSEMBLY, 5021 CALIPER, 1/2" K5
2	1	5023-SUB	SUB-ASSEMBLY, 5023 CALIPER
2.1	1	5021-0003	SPACER, 5021 CALIPER
2.2	2	5023-0002	SADDLE, 5023 CALIPER
2.3	1	5021-0001	FOOT, 5021 CALIPER
2.4	5	5021-0023	TIE ROD, 5/8-11NC
2.5	2	5021-0022	SADDLE PIN, 5021 CALIPER
2.6	4	1026-0824	COTTER PIN, 3/16 X 1 1/2
2.7	5	1022-0116	REG HEX NUT 5/8-11 NC, GR 18-8
2.8	2	5023-0004	LEVER, 5023 CALIPER
2.9	2	5021-0011	BALANCING LINK, PART 1, 5021 CALIPER
2.10	2	5021-0226	LINK PIN, 5/16NC X 7/8 LG
3	1	6210-H	ACTUATOR ASSEMBLY, HYDRAULIC APPLIED
4	4	5021-0006	PIVOT BLOCK, 5021 CALIPER
5	2	5021-0021	SHOE PIN, 5021 CALIPER
6	4	1026-0516	COTTER PIN, 1/8" X 1", SS
7	8	1002-1216	SCREW, SKT HD CAP, 3/8-16 UNC X 1, SS
8	2	6211-0107	CLEVIS PIN, 6211 ACTUATOR
9	2	5021-0012	BALANCE LINK NO. 2, 5021 CALIPER
10	4	1023-0108	WASHER, FLAT, #10, TYPE A, SS
11	4	1002-0808	SCREW, SKT HD CAP, #10-24 UNC x 1/2 LG, SS
12	2	1202-1010	SPRING, EXTENSION, 1.25 OD X .156 WIRE, AISI 302, 30 TURNS
13	2	1023-0215	FLAT WASHER, 1/2 X 5/16, ASTM F436
14	4	1039-0238	HITCH PIN, .120 X 2 3/8, S/S

ITEM	QTY.	PART NUMBER	5023-HW DESCRIPTION
1	2	5021-LS	SHOE ASSEMBLY, 5021 CALIPER, 1/2" K5
2	1	5023-SUB-W	SIDE MOUNT SUB-ASSEMBLY, 5023 CALIPER
2.1	1	5021-0003	SPACER, 5021 CALIPER
2.2	2	5023-0002	SADDLE, 5023 CALIPER
2.3	5	5021-0023	TIE ROD, 5/8-11NC
2.4	2	5021-0022	SADDLE PIN, 5021 CALIPER
2.5	4	1026-0824	COTTER PIN, 3/16 X 1 1/2
2.6	10	1022-0116	REG HEX NUT 5/8-11 NC, GR 18-8
2.7	2	5023-0004	LEVER, 5023 CALIPER
2.8	2	5021-0011	BALANCING LINK, PART 1, 5021 CALIPER
2.9	2	5021-0226	LINK PIN, 5/16NC X 7/8 LG
2.10	2	5021-0101	SIDE MOUNT BRACKET, 5021 CALIPER
3	1	6210-H	ACTUATOR ASSEMBLY, HYDRAULIC APPLIED
4	4	5021-0006	PIVOT BLOCK, 5021 CALIPER
5	8	1002-1216	SCREW, SKT HD CAP, 3/8-16 UNC X 1, SS
6	2	5021-0021	SHOE PIN, 5021 CALIPER
7	4	1026-0516	COTTER PIN, 1/8" X 1", SS
8	2	6211-0107	CLEVIS PIN, 6211 ACTUATOR
9	2	5021-0012	BALANCE LINK NO. 2, 5021 CALIPER
10	4	1023-0108	WASHER, FLAT, #10, TYPE A, SS
11	4	1002-0808	SCREW, SKT HD CAP, #10-24 UNC x 1/2 LG, SS
12	2	1202-1010	SPRING, EXTENSION, 1.25 OD X .156 WIRE, AISI 302, 30 TURNS
13	2	1023-0215	FLAT WASHER, 1/2 X 5/16, ASTM F436
14	4	1039-0238	HITCH PIN, .120 X 2 3/8, S/S

# PARTS LISTING

## 6210-H Actuator



ITEM	QTY.	PART NUMBER	6210-H DESCRIPTION
1	1	6210-0201	CYLINDER, 6210-H ACTUATOR
2	1	6210-0202	CYLINDER ENDCAP, 6210-H
3	1	6210-0103	PISTON, 6210-H
4	1	6230-0005	CLEVIS, 3/4 UNC X 0.50 DIA
5	1	6210-0010	WEAR RING, 1 5/8 x 1 3/8 x 1/4, NYLON
6	6	1002-1012	SCREW, SKT HD, 1/4-20 UNC X 3/4, SS
7	1	1016-0804	SET SCREW 10-24 X 1/4, SS
8	1	1102-6019	WIPER, UNIVERSAL, 1.25", AU90
9	1	1102-8010	SEAL, PISTON, U-CUP, 1.63", AU90

Note: Parts lists are applicable to standard models only.