

5029-A

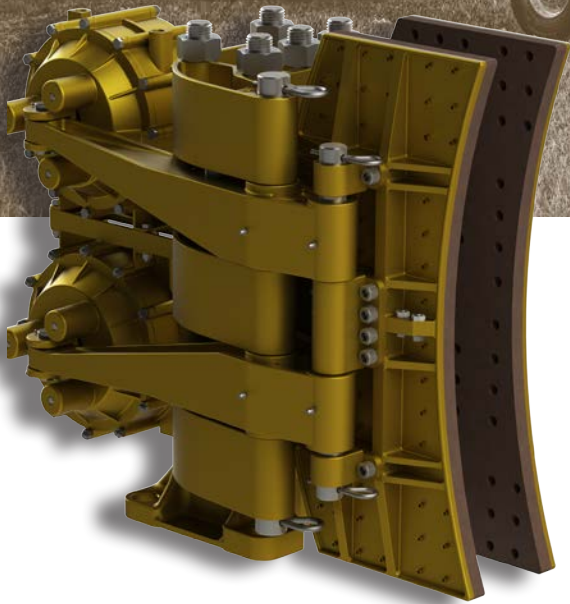
AIR APPLIED CALIPER DISC BRAKE

KEY BENEFITS

Bronze & stainless steel construction

Easily changed brake pads

Well matched to Kobelt's standard range of 4" x 10" ventilated discs



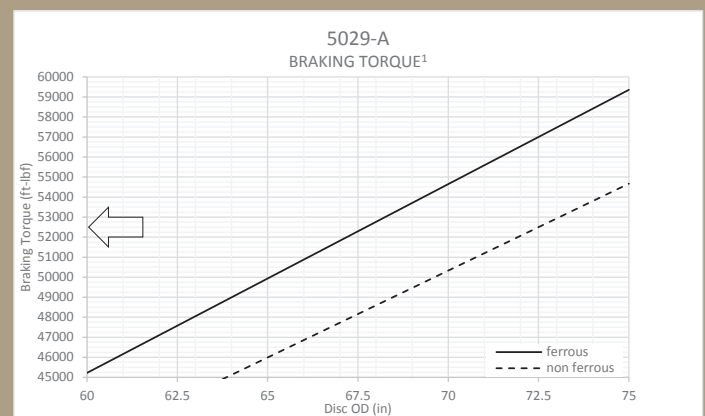
Putting you in control.

For over three decades, Kobelt has been manufacturing air applied disc brakes using a double diaphragm design for accurate braking control. Constructed of bronze and stainless steel, Kobelt's disc brakes are built to last in the harshest conditions.

Available with several options, these caliper disc brakes are well suited for service braking applications on drawworks, work boats and more.

SPECIFICATIONS

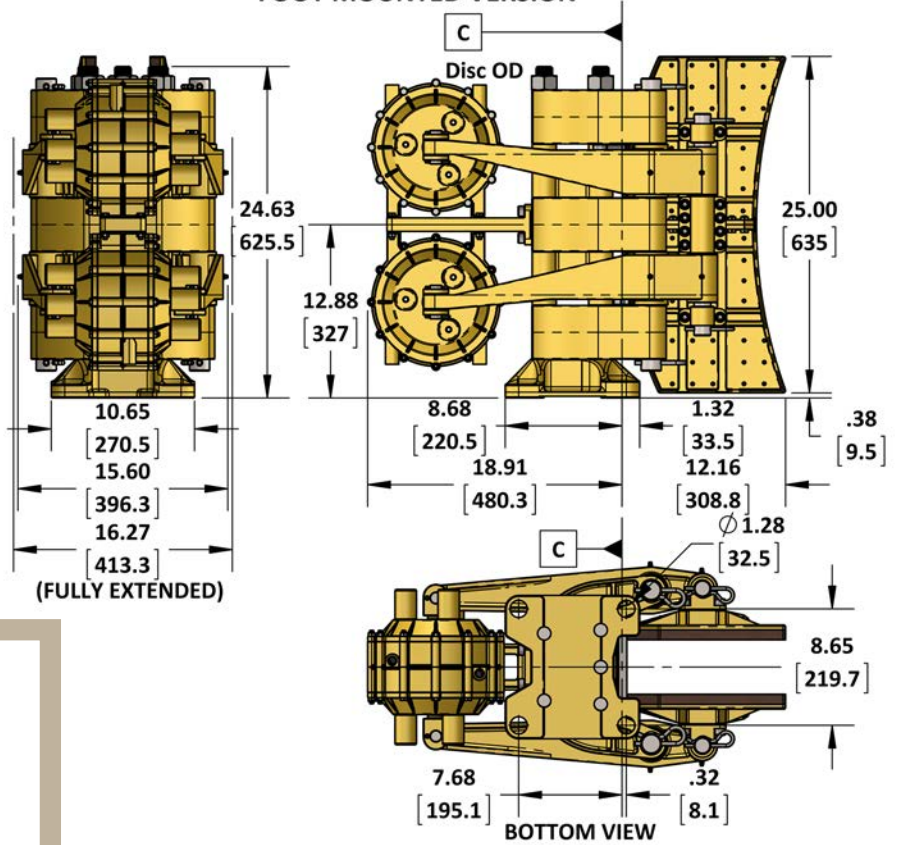
Normal Force:	29,750 lbs	[132 KN]
Maximum Pressure:	100 psi	[6.9 bar]
Port Size:	3/8 NPT	
Temperature Range:	-40°F...+131°F -40°C...+55°C	
Disc Thickness:	4 in	[102 mm]
Minimum Disc Diameter:	60 in	[1524 mm]
Maximum Disc Diameter :	74 in	[1880 mm]
Pad Life:	21,680 hp-hr	[16,180 kw-hr]
Weight:	535 lbs	[243 kg]



¹ Values in this chart are theoretical and for reference only. They are based on properly bedded and burnished linings acting on a ductile iron rotor at 20°C and manufactured to required specifications.

SPECIFICATIONS

FOOT MOUNTED VERSION



Brake Model Code Key

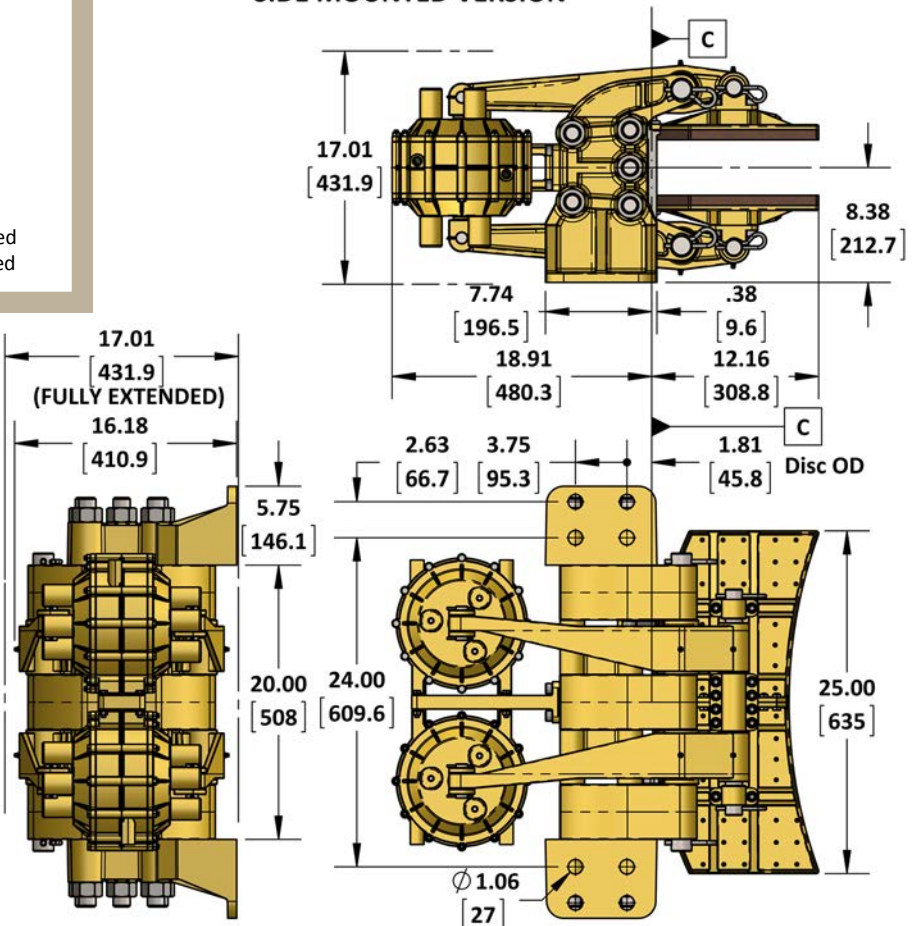
5029-A - -

Friction material
 (blank) = standard
 N = non-sparking
 C = low COF (.12-.15)
 E = mid COF (.25-.28)

Disc thickness
 (blank) = 4.000 in
 350 = 3.500 in
 300 = 3.000 in
 250 = 2.500 in
 200 = 2.000 in

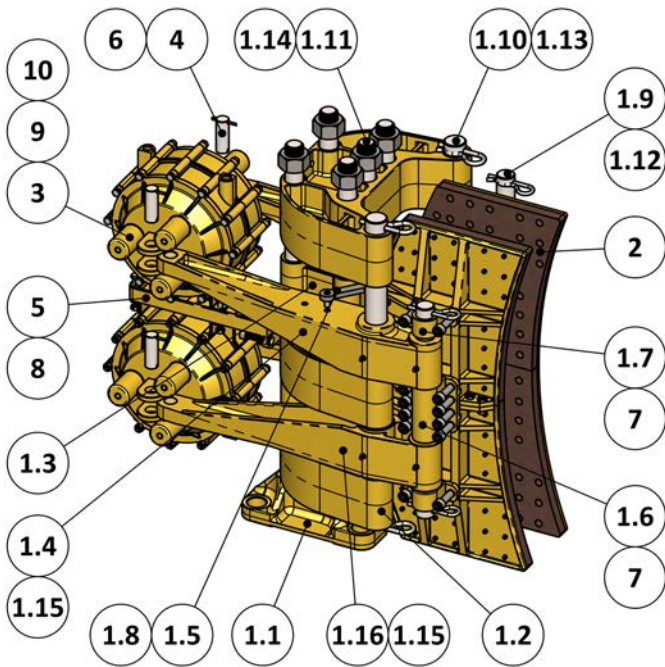
Mounting code
 (blank) = foot mounted
 W = side mounted

SIDE MOUNTED VERSION

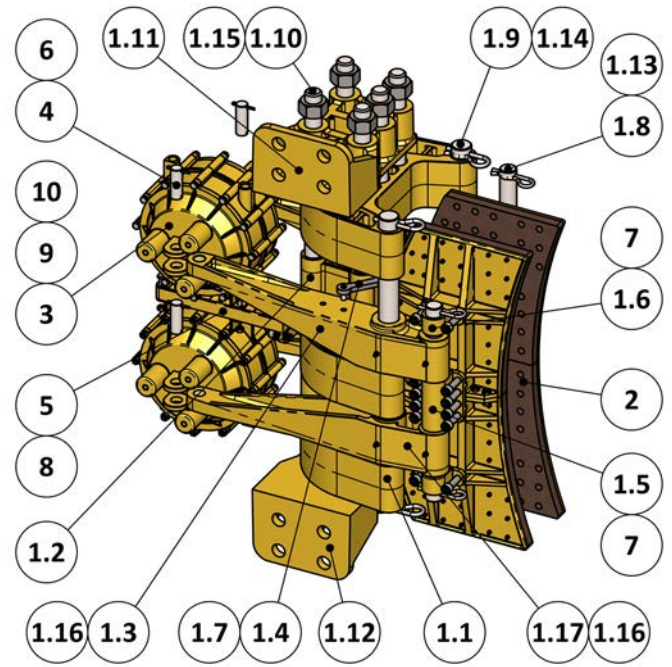


PARTS LISTING

5029-A Caliper Brake



5029-AW Caliper Brake

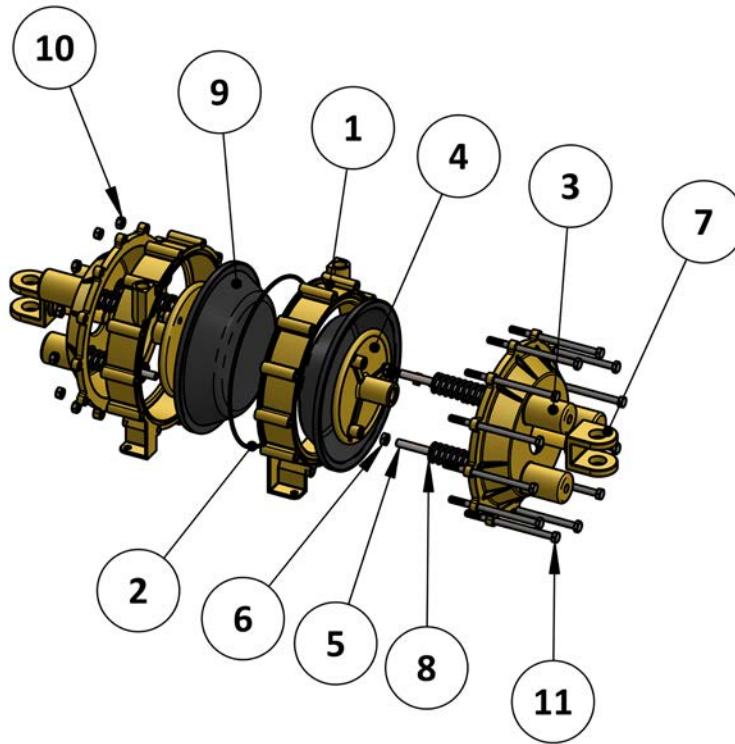


ITEM	QTY.	PART NUMBER	5029-A DESCRIPTION
1	1	5029-SUB	SUB-ASSEMBLY, 5029 CALIPER
1.1	1	5029-0001	FOOT, 5029 / 5030 CALIPER
1.2	3	5029-0002	SADDLE, 5029 CALIPER
1.3	2	5029-0003	SPACER, 5029 CALIPER
1.4	2	5029-0004R	LEVER, 5029 CALIPER, RIGHT
1.5	2	5029-0011	BALANCING LINK, 5029 CALIPER
1.6	2	5029-0013	PIVOT BLOCK, INNER, 5029 CALIPER
1.7	4	5029-0014	PIVOT BLOCK, OUTER, 5029 CALIPER
1.8	2	5029-0016	LINK PIN, 5029 - 5049 CALIPERS
1.9	2	5029-0021	SHOE PIN, 5029 CALIPER
1.10	2	5029-0022	MAIN PIN, 5029 CALIPER
1.11	5	5029-0023	TIE ROD, 5029 CALIPER
1.12	4	1039-0470	HITCH PIN, 1/4 X 4-1/4, STEEL
1.13	4	1039-0553	HITCH PIN, 5/16 X 4, STEEL
1.14	5	1022-0125	HEX NUT, 1-3/4"-7 UNC, 18-8
1.15	8	1501-0301	GREASE NIPPLE, 1/4-28
1.16	2	5029-0004L	LEVER, 5029 CALIPER, LEFT
2	2	5029-LS	SHOE ASSEMBLY, 5029 CALIPER
3	2	6136	AIR APPLIED ACTUATOR, TYPE 36
4	4	6136-0006	CLEVIS PIN, 5029/5030
5	1	5029-0015	AIR APPLIED ACTUATOR BRACKET, 5029 CALIPER
6	8	1026-0624	COTTER PIN, 5/32 x 1-1/2, SS
7	24	1002-1424	SHCS, 1/2-13 UNC X 1-1/2, SS
8	4	1002-1420	SCREW, SKT HD, 1/2-13 UNC X 1-1/4, SS
9	4	1001-1128	SCREW, HEX HEAD, 5/16-18 X 1.75, 18-8
10	4	1022-0111	NUT, HEX, 5/16 UNC, 18-8

ITEM	QTY.	PART NUMBER	5029-AW DESCRIPTION
1	1	5029-SUB-W	SUB-ASSEMBLY, 5029 CALIPER
1.1	3	5029-0002	SADDLE, 5029 CALIPER
1.2	2	5029-0003	SPACER, 5029 CALIPER
1.3	2	5029-0004R	LEVER, 5029 CALIPER, RIGHT
1.4	2	5029-0011	BALANCING LINK, 5029 CALIPER
1.5	2	5029-0013	PIVOT BLOCK, INNER, 5029 CALIPER
1.6	4	5029-0014	PIVOT BLOCK, OUTER, 5029 CALIPER
1.7	2	5029-0016	LINK PIN, 5029 - 5049 CALIPERS
1.8	2	5029-0021	SHOE PIN, 5029 CALIPER
1.9	2	5029-0022	MAIN PIN, 5029 CALIPER
1.10	5	5029-0023-S	TIE ROD, 5029 CALIPER
1.11	1	5029-1001L	SIDE MOUNT FOOT, LEFT HAND, 5029 CALIPER
1.12	1	5029-1001R	SIDE MOUNT FOOT, RIGHT HAND, 5029 CALIPER
1.13	4	1039-0470	HITCH PIN, 1/4 X 4-1/4, STEEL
1.14	4	1039-0553	HITCH PIN, 5/16 X 4, STEEL
1.15	10	1022-0125	HEX NUT, 1-3/4"-7 UNC, 18-8
1.16	8	1501-0301	GREASE NIPPLE, 1/4-28
1.17	2	5029-0004L	LEVER, 5029 CALIPER, LEFT
2	2	5029-LS	SHOE ASSEMBLY, 5029 CALIPER
3	2	6136	AIR APPLIED ACTUATOR, TYPE 36
4	4	6136-0006	CLEVIS PIN, 5029/5030
5	1	5029-0015	AIR APPLIED ACTUATOR BRACKET, 5029 CALIPER
6	8	1026-0624	COTTER PIN, 5/32 x 1-1/2, SS
7	24	1002-1424	SHCS, 1/2-13 UNC X 1-1/2, SS
8	4	1002-1420	SCREW, SKT HD, 1/2-13 UNC X 1-1/4, SS
9	4	1001-1128	SCREW, HEX HEAD, 5/16-18 X 1.75, 18-8
10	4	1022-0111	NUT, HEX, 5/16 UNC, 18-8

PARTS LISTING

6136 Actuator



ITEM	QTY.	PART NUMBER	6136 DESCRIPTION
1	2	6236-0002	CENTER HOUSING, SIZE 36, BRASS
2	1	1101-0269	O RING, 8 3/4 X 1/8, NBR70
3	2	6236-0001	END CAP, SIZE 36, BRASS
4	2	6136-0003	DIAPHRAM WASHER, SIZE 36
5	6	6136-0004	GUIDE PIN
6	6	1022-0212	JAM NUT, 3/8-16 NC,SS
7	2	6136-0005	CLEVIS, 7/8 DIA X 3/4 UNC
8	6	1201-0148	SPRING, COMPRESSION, 1.04 OD X 5.43 LG, SS
9	2	1105-0036	DIAPHRAGM, TYPE 36
10	12	1022-0111	NUT, HEX, 5/16 UNC, 18-8
11	12	1001-1180	SCREW, CAP, HX HD, 5/16-18 x 5, SS

Note: Parts lists are applicable to standard models only.