

MODEL 7065-S FULL POWER FOLLOW UP CYLINDER

This cylinder is constructed entirely in bronze and stainless steel. It is essentially an extended model of our Model 7065 equipped with servo valve for full power follow up (power assisted) steering. The main cylinder bore is 2½” and the piston rod is made of 1” chromed stainless steel.

Rated at a maximum operating pressure of 1500 psi, they are currently only available in a balanced cylinder configuration.

When a single cylinder is not sufficient to provide the required rudder torque, they can be installed in a twin cylinder configuration whereby the 7065-S would serve as a master with a second cylinder of the same stroke.

These cylinders provide simplicity in installation, effortless control and years of trouble-free service due to their design and construction.

Design pressure: 1500 psi
Refer to Model 7065 for other technical information.

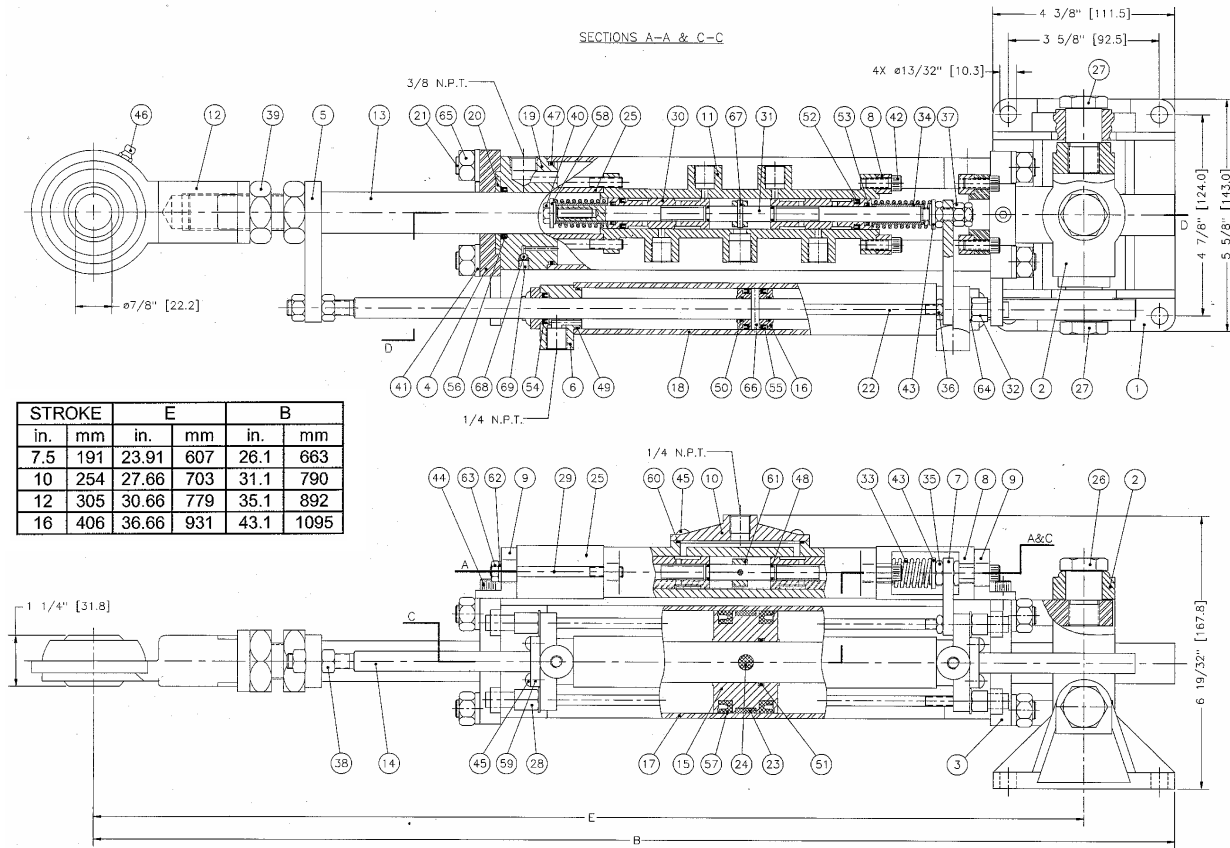
ORDERING INFORMATION

7065-SB7.5 for 7½” stroke
7065-SB10 for 10” stroke
7065-SB12 for 12” stroke
7065-SB16 for 16” stroke

Stroke	Main Cylinder Displacement	
	cu. in.	cu. cm
7.5”	30.9	507
10”	41.2	672
12”	49.5	803
16”	66.0	1082
Servo Cylinder Displacement		
7.5”	4.4	72
10”	5.9	97
12”	7.1	116
16”	9.4	154

Note: The foot for the 7065-S is different from the 7065.

DIMENSIONS AND PARTS LIST MODEL 7065-S



STROKE		E		B	
in.	mm	in.	mm	in.	mm
7.5	191	23.91	607	26.1	663
10	254	27.66	703	31.1	790
12	305	30.66	779	35.1	892
16	406	36.66	931	43.1	1095

ITEM	QTY	PART NUMBER	DESCRIPTION	ITEM	QTY	PART NUMBER	DESCRIPTION	ITEM	QTY	PART NUMBER	DESCRIPTION
1	1	7065-0017	Foot	24	1	7065-0016	Main piston pin	47	2	1101-0141	"O" ring
2	1	7065-0018	Swivel	25	1*	7065-0025	Spacer	48	2	1101-0010	"O" ring
3	1	7065-0019	End cap - swivel end	26	2	7065-0026	Hex shoulder bolt	49	2	1101-0020	"O" ring
4	1	7065-0020	End cap	27	2	7065-0027	Hex shoulder bolt	49	2	1101-0014	"O" ring
5	1	7065-0021	Link arm	28	2	7065-0028	Hex nut (long)	50	1	1101-0120	"O" ring
6	2	7147-0006	Servo end cap	29	2*	7065-0029	Spacer tie rod	52	4	1102-0005	"U" cup
7	1	7065-0022	Servo link	30	2	7147-0022S	Outer spool	53	2	1102-0062	"U" cup
8	1	7147-0008	Spring cover	31	1	7147-0023	Inner spool	54	2	1102-3005	"U" cup - polypak
9	2	7147-0009	Servo mounting bracket	32	2	7147-0027	Hex nut	55	2	1102-2007	"U" cup
10	1	7147-0010	Spool housing cover	33	2	1201-0207	Spring	56	2	1102-2009-H	"U" cup
11	1	7147-0011	Spool housing	34	2	7147-0024	Bushing	57	2	1102-0032	"U" cup
12	1	7065-0004	Rod end	35	2	1022-0261	Jam nut	58	1	7147-0058B	Washer
13	1*	7065-0023	Main piston rod	36	1	1022-0260	Jam nut	59	2	7147-0006B	Seal cover
14	1*	7065-0024	Servo piston rod	37	1	1022-0161	Hex nut	60	1	7147-0060	Gasket
15	1	7065-0014	Main piston	38	2	1022-0162	Hex nut	61	1	7147-0050	Spacer
16	1	7147-0016	Servo piston	39	2	1022-0268	Jam nut	62	2	1022-0310	Lock washer
17	1*	7065-0006	Main tube	40	1	1001-1008	Hex head screw	63	2	1022-0110	Hex nut
18	1*	7147-0018	Servo tube	41	8	1023-0313	Lock washer	64	4	1023-0110	Flat washer
19	2	7065-0007	Main shaft guide	42	4	1002-1010	Hex socket head screw	65	8	1022-0163	Hex nut
20	2	7065-0011	Retaining washer	43	1	7147-0058A	Washer	66	1	7005-0024	Pin
21	4*	7065-0012	Main tie rod	44	2	1002-1012	Hex socket head screw	67	1	1024-0510	Spring pin
22	2*	7147-0021	Servo tie rod	45	8	1012-0808	Round hd Philips screw	68	2	1301-0005	SS ball
23	1	7065-0013	Wear ring	46	1	1501-0301	Grease nipple	69	2	1016-1003	Setscrew

* Length may vary