

KOBELT

9000 SERIES ROTARY UNIONS

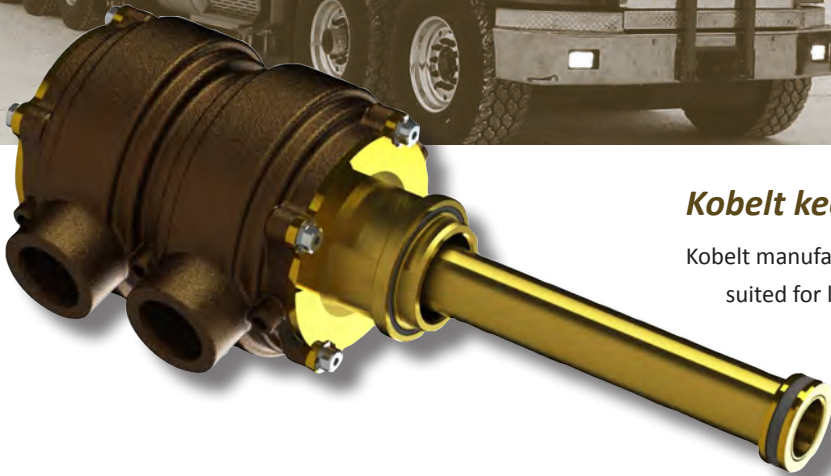


Ruggedly
Constructed

Brass
or
Stainless
Components

High
Quality

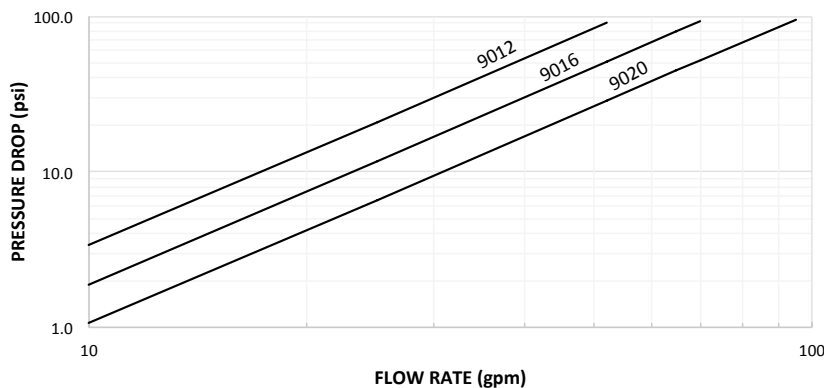
Code 61
Flanged
Connection



Kobelt keeps you cool.

Kobelt manufactures a range of two passage rotary unions that are well suited for liquid cooling or lubrication applications. These rotary unions are ruggedly constructed featuring brass or stainless components, Teflon seals and sealed ball bearings. The 9000 series rotary unions are rigidly secured to the rotor by means of a code 61 flanged connection.

9000 SERIES ROTARY UNION
PERFORMANCE CHART



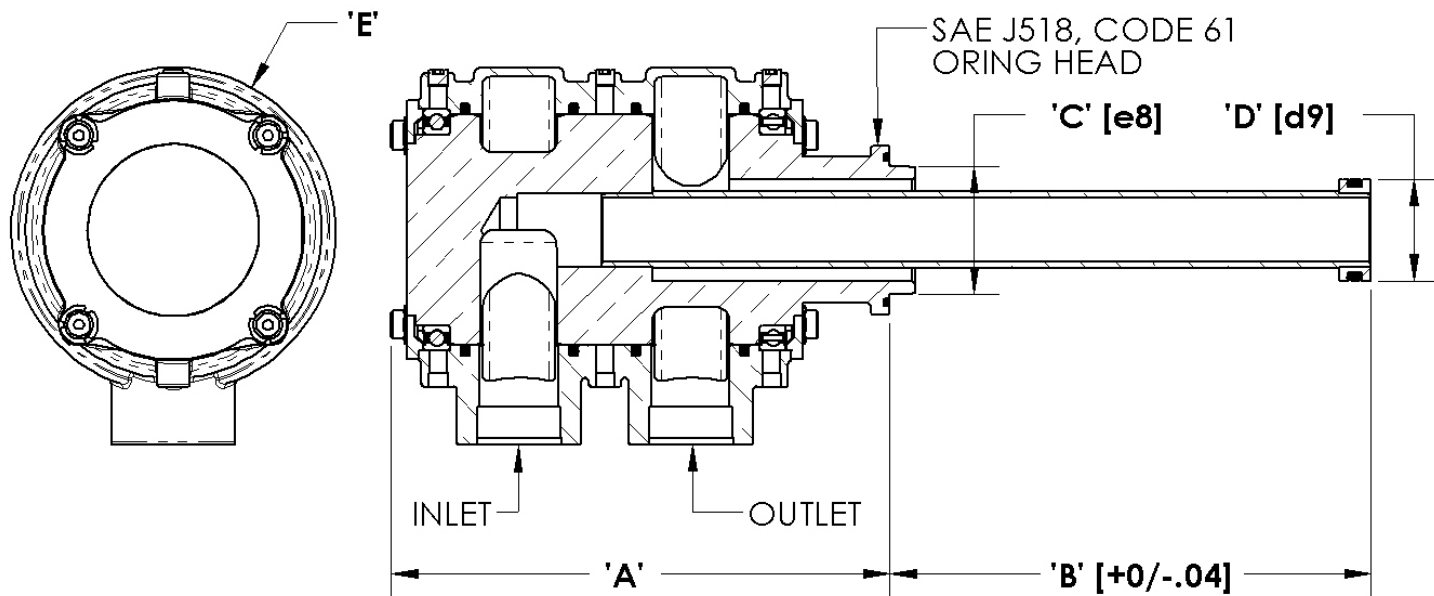
Note:

This chart predicts the total pressure drop through the rotary union for water. To estimate the pressure drop for other fluids, multiply by the ratio of the specific gravities. For simplicity, this chart ignores the minimal effects of viscosity.

For more information, please contact Kobelt customer service at sales@kobelt.com.

KOBELT

SPECIFICATIONS



Data Table

PART NO.	PORT SIZE	FLANGE SIZE	LENGTH 'A'	LENGTH 'B'	DIA 'C'	DIA. 'D'	DIA. 'E'	MAX SPEED	WEIGHT
9012	-12 ORB	-24C61	7.90 in	7.48 in	1.50 in	1.13 in	4.00 in	900 rpm	29 lbs
9016	-16 ORB	-32C61	8.70 in	8.46 in	2.00 in	1.50 in	5.00 in	700 rpm	38 lbs
9020	-20 ORB	-40C61	9.80 in	9.45 in	2.50 in	2.00 in	6.38 in	550 rpm	48 lbs

For more information, please contact Kobelt customer service at sales@kobelt.com.

Temperature Range: -22°F ...+248°F
 Maximum Pressure: 400 psi